

PANEL 8X8 2-PACK

7 DAY PROGRAM TYPICAL



3D RENDERING

STATION SPECIFICATIONS

- OPS2 Panel System
- Monolithic, partial glazed stackers
- 8' x 8' - 2-Pack
- 53", 67" panel height
- Base feed power, 2 REC/station, power down spine
- Keyboard tray
- Tackboard
- LED task lighting
- Paper management trays
- 2-drawer storage lateral
- Overhead storage flipper door unit
- Overhead shelf unit

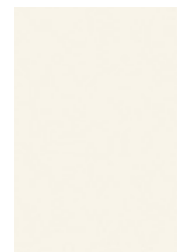
FINISHES



PANEL FABRIC Pebble Creek



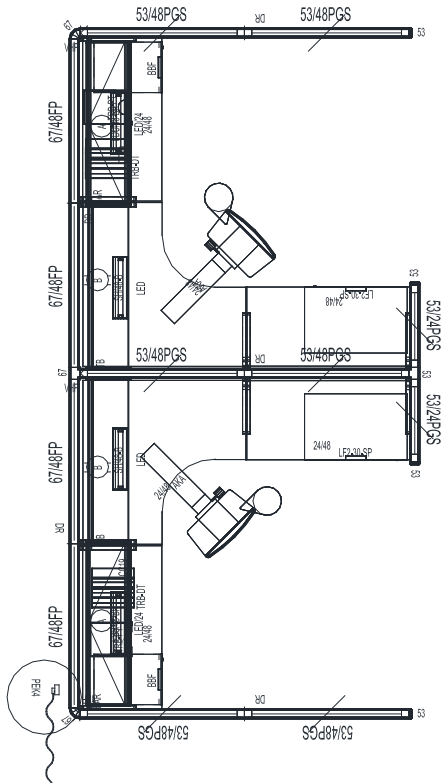
ACCENT FABRIC Colonial Downs



SURFACE & EDGE
Antique White



PAINT
BU



2D PLAN LAYOUT

PRICING

See next page for full BOM.

\$26,391.00 LIST TOTAL

\$13,195.50 PRICE PER STATION

Typical pricing is for reference only.
Pricing must be confirmed via official
Price Book or Customer Service.

PANEL 8X8 2-PACK

7 DAY PROGRAM TYPICAL



PRICING

Part Number	Part Description	Qty	List	Ext List
F6748P	67 X 48 FABRIC PANEL - POWERED	4	\$1,249.00	\$4,996.00
F5348	53 X 48 FABRIC PANEL - W/BASE	6	\$829.00	\$4,974.00
CCWS484824	48 X 48 X 24 CURVILINEAR CORNER WORK SURFACE	2	\$685.00	\$1,370.00
WS2448	24 X 48 WORK SURFACE	4	\$425.00	\$1,700.00
FDU4812P	48 X 12 FLIPPER DOOR UNIT- B STYLE - PAINTED	2	\$645.00	\$1,290.00
SH4812B	48 X 12 SHELF - B STYLE	2	\$245.00	\$490.00
LF2-30-SP	30"W LATERAL FILE, SQUARE PULL, 2 DRAWER	2	\$1,459.00	\$2,918.00
BBF-SP	BOX/BOX/FILE PEDESTAL, SQUARE PULL 20"D W/O TOP	2	\$755.00	\$1,510.00
F5324	53 X 24 FABRIC PANEL - W/BASE	2	\$545.00	\$1,090.00
TLN-LED-S-1	LED Task Light w/ Motion Sensor and Power Supply	4	\$425.00	\$1,700.00
REC/A	A CIRCUIT DUPLEX RECEPTACLES	2	\$47.00	\$94.00
REC/B	B CIRCUIT DUPLEX RECEPTACLES	2	\$47.00	\$94.00
EC53A2	53" END CAP	4	\$75.00	\$300.00
AKAVALUE	VALUE KEYBOARD SET- INCLUDES 21" TRACK ARM & 20" TRAY, WRIST REST & MOUSE TRAY	2	\$479.00	\$958.00
TB48B	48" X 16" TACKBOARD- B STYLE	2	\$245.00	\$490.00
TRB48	TOOL RAIL BAR 48"	2	\$135.00	\$270.00
TRBDPT	DIAGONAL PAPER TRAY	2	\$115.00	\$230.00
TRBVPT	VERTICAL PAPER TRAY	2	\$67.00	\$134.00
2WY67A2	67" - 2 WAY CONNECTOR	2	\$185.00	\$370.00
VHF	VARIABLE HEIGHT FILLER - PANEL TO CONNECTOR	3	\$35.00	\$105.00
PTP62	62" PANEL TO PANEL CONNECTOR	2	\$31.00	\$62.00
3WY67A2	67" - 3 WAY CONNECTOR	1	\$319.00	\$319.00
PTP48	48" PANEL TO PANEL CONNECTOR	3	\$31.00	\$93.00
3WY53A2	53" - 3 WAY CONNECTOR	1	\$289.00	\$289.00
PEK4 (L OR R)	4 CIR. BASE POWER ENTRY KIT	1	\$545.00	\$545.00

\$26,391.00 LIST TOTAL

\$13,195.50 PRICE PER STATION

Typical pricing is for reference only.
Pricing must be confirmed via official
Price Book or Customer Service.