

Corner Work Surface with Shelf:

Assemble support shelf to work surface with cut out.

1. Put these two blocks together with a screw.

SEE FIGURE 1.

2. Put the gasket into connector and rotate screw into gasket, but don't tighten the block.

SEE FIGURE 2.

3. Install plastic top cap on the connector.

SEE FIGURE 3.

4. Make sure the top block's top in a line with plastic top cap and tighten the block.

SEE FIGURE 4.

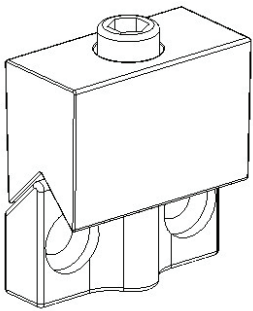


FIGURE 1

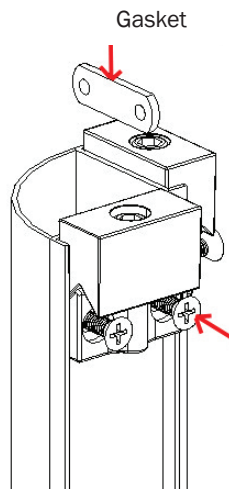
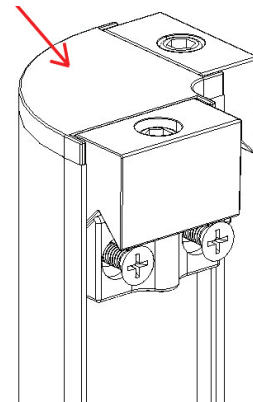


FIGURE 2

Don't tighten these screws so we can adjust blocks' position.

Note: If you tightly fix the block, it maybe at a lower position, which will casue an inclination after assembling connector and one piece of rail together.

FIGURE 3
Install plastic top cap on the connector



Note: After you insert the top cap into the connector, you can tighten the block because the top cap will provide you an accurate wall, which will guarantee block at a correct position.

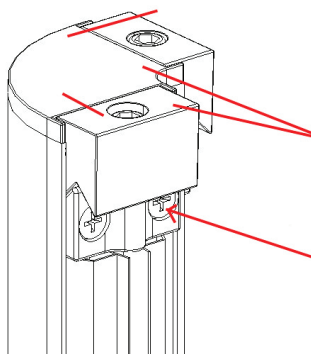


FIGURE 4

Adjust blocks to correct position, namely these two faces in a line and tighten the screws.

Before you tighten these screws, you must have adjusted blocks to a correct position.

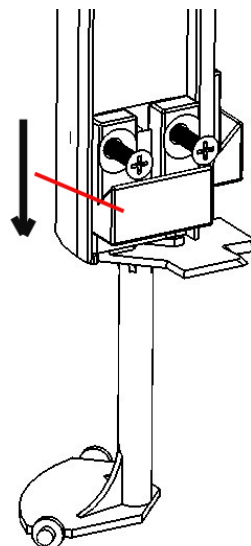


FIGURE 5

On the contrary, before you tighten the bottom block, you have to try your best to pull it down.