

# 9-5X9-5 85H - 2 PACK

## MODULAR WALL TYPICAL



### 3D RENDERING

### STATION SPECIFICATIONS

- Modular Wall dual office
- 9'-5" x 9'-5"
- 85" panel height
- Partial glazed stackers
- Base feed power, 2 REC/station, power down spine
- 85H standard door
- Pencil drawer
- LED task lighting
- Tackboard
- Paper management trays
- BBF-FP storage pedestal
- 2-drawer lateral file
- Overhead flipper door storage unit

### FINISHES



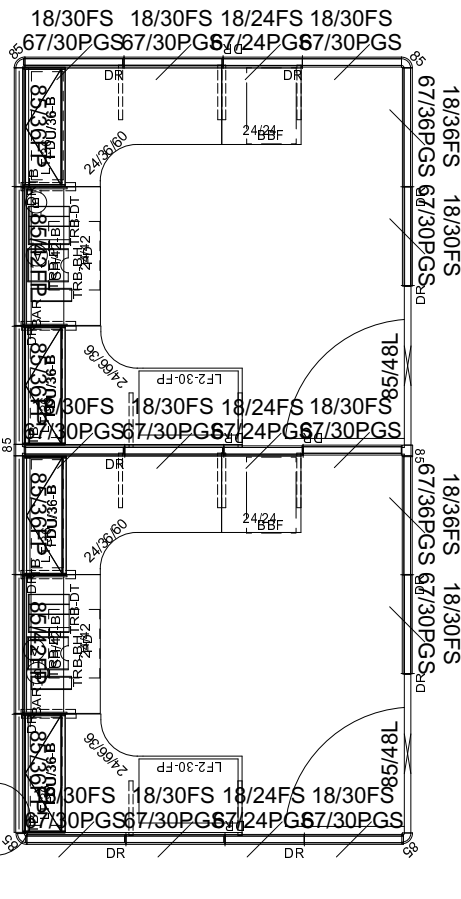
### PRICING

See next page for full BOM.

**\$68,908.00 LIST TOTAL**

**\$34,454.00 PRICE PER STATION**

Typical pricing is for reference only. Pricing must be confirmed via official Price Book or Customer Service.



### 2D PLAN LAYOUT

# 9-5X9-5 85H - 2 PACK

## MODULAR WALL TYPICAL



### PRICING

Part Number	Part Description	Qty	List	Ext List
2WY85A2	85" - 2 WAY CONNECTOR	4	\$209.00	\$836.00
3WY85A2	85" - 3 WAY CONNECTOR	2	\$359.00	\$718.00
BBF-FP	BOX/BOX/FILE PEDESTAL FULL PULL 23"D W/O TOP	2	\$829.00	\$1,658.00
CRNRBR- LEFT	CORNER BRACKET (SPEC L OR R)	2	\$12.00	\$24.00
CRNRBR- RIGHT	CORNER BRACKET (SPEC L OR R)	2	\$12.00	\$24.00
DOORPNL85L	85" DOOR PANEL 48" WIDE W/LITE AO2 SERIES (L SWING)	2	\$3,205.00	\$6,410.00
ECCWS362460R	36 X 24 X 60 CURVILINEAR CORNER SURFACE - RT EXT	2	\$909.00	\$1,818.00
ECCWS362466L	36 X 24 X 66 CURVILINEAR CORNER SURFACE - LFT EXT	2	\$939.00	\$1,878.00
F8536P	85 X 36 FABRIC PANEL - POWERED	4	\$1,279.00	\$5,116.00
F8542P	85 X 42 FABRIC PANEL - POWERED	2	\$1,335.00	\$2,670.00
FDU3612B	36 X 12 FLIPPER DOOR UNIT- B STYLE	8	\$579.00	\$4,632.00
LF2-30-FP	30"W Lateral File, Full Pull, 2 Drawer	2	\$1,509.00	\$3,018.00
PDN	PENCIL DRAWER	2	\$115.00	\$230.00
PEK4 (L OR R)	4 CIR. BASE POWER ENTRY KIT	1	\$545.00	\$545.00
PGSF6724-391414	67 (39-14-14) x 24 Fabric Stack Glass Panel w/Base	3	\$1,575.00	\$4,725.00
PGSF6730-391414	67 (39-14-14) x 30 Fabric Stack Glass Panel w/Base	11	\$1,645.00	\$18,095.00
PGSF6736-391414	67 (39-14-14) x 36 Fabric Stack Glass Panel w/Base	2	\$1,745.00	\$3,490.00
PTP80	80" PANEL TO PANEL CONNECTOR	17	\$35.00	\$595.00
REC/A	A CIRCUIT DUPLEX RECEPTACLES	4	\$47.00	\$188.00
REC/B	B CIRCUIT DUPLEX RECEPTACLES	2	\$47.00	\$94.00
SF1824	18 X 24 FABRIC STACK PANEL	3	\$405.00	\$1,215.00
SF1830	18 X 30 FABRIC STACK PANEL	11	\$435.00	\$4,785.00
SF1836	18 X 36 FABRIC STACK PANEL	2	\$465.00	\$930.00
SH4212B	42 X 12 SHELF - B STYLE	2	\$235.00	\$470.00
TB36B	36" X 16" TACKBOARD- B STYLE	4	\$225.00	\$900.00
TLN-LED-S-1	LED Task Light w/ Motion Sensor and Power Supply	4	\$425.00	\$1,700.00
TRB42	TOOL RAIL BAR 42"	2	\$129.00	\$258.00
TRBBH	BINDER HOLDER	2	\$67.00	\$134.00
TRBDPT	DIAGONAL PAPER TRAY	2	\$115.00	\$230.00
TRBVPT	VERTICAL PAPER TRAY	2	\$67.00	\$134.00
WS2424	24 X 24 WORK SURFACE	2	\$295.00	\$590.00
WS2442	24 X 42 WORK SURFACE	2	\$399.00	\$798.00

**\$68,908.00 LIST TOTAL**

**\$34,454.00 PRICE PER STATION**

Typical pricing is for reference only.  
Pricing must be confirmed via official  
Price Book or Customer Service.