

12X9-5 107H - 2 PACK

MODULAR WALL TYPICAL



3D RENDERING

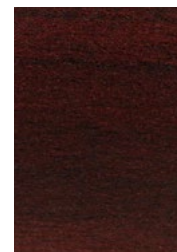
STATION SPECIFICATIONS

- Modular Wall dual conference room
- 12' x 9'-5" - 2-Pack
- 107" panel height
- Partial glazed stackers
- Base feed power, 2 REC/station, power down spine
- 85H standard door
- Racetrack conference table

FINISHES



PANEL FABRIC
Belmont Silver



SURFACE
Empire Mahogany



PAINT & EDGE
MT

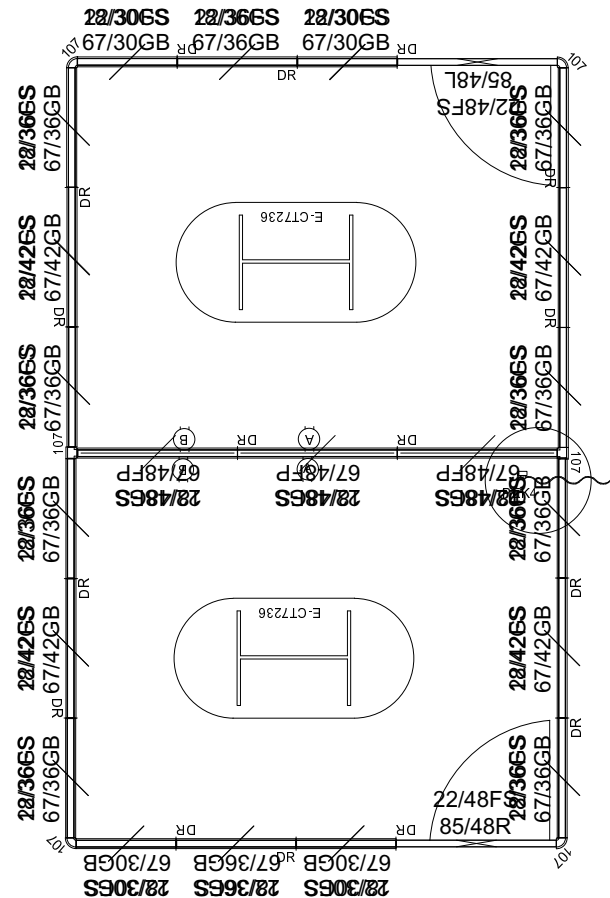
PRICING

See next page for full BOM.

\$81,130.00 LIST TOTAL

\$40,565.00 PRICE PER STATION

Typical pricing is for reference only. Pricing must be confirmed via official Price Book or Customer Service.



2D PLAN LAYOUT

12X9-5 107H - 2 PACK

MODULAR WALL TYPICAL



PRICING

Part Number	Part Description	Qty	List	Ext List
2WY107A2	107" - 2 WAY CONNECTOR	4	\$235.00	\$940.00
3WY107A2	107" - 3 WAY CONNECTOR	2	\$425.00	\$850.00
DOORPNL85L	85" DOOR PANEL 48" WIDE W/LITE AO2 SERIES (L SWING)	1	\$3,205.00	\$3,205.00
DOORPNL85R	85" DOOR PANEL 48" WIDE W/LITE AO2 SERIES (R SWING)	1	\$3,205.00	\$3,205.00
F6748P	67 X 48 FABRIC PANEL - POWERED	3	\$1,249.00	\$3,747.00
G6730	67 X 30 GLAZED PANEL - W/BASE	4	\$1,405.00	\$5,620.00
G6736	67 X 36 GLAZED PANEL - W/BASE	10	\$1,655.00	\$16,550.00
G6742	67 X 42 GLAZED PANEL - W/BASE	4	\$1,785.00	\$7,140.00
HLEG30S	Square H-Leg for 30"D Surface	4	\$435.00	\$1,740.00
PEK4 (L OR R)	4 CIR. BASE POWER ENTRY KIT	1	\$545.00	\$545.00
PTP102	102 PANEL TO PANEL CONNECTOR	16	\$54.00	\$864.00
REC/A	A CIRCUIT DUPLEX RECEPTACLES	2	\$47.00	\$94.00
REC/B	B CIRCUIT DUPLEX RECEPTACLES	2	\$47.00	\$94.00
RTSC3672	36X72 Racetrack Conf Table (No Hardware Or Base)	2	\$995.00	\$1,990.00
SF2230	22 X 30 Fabric Stack Panel	4	\$505.00	\$2,020.00
SF2236	22 X 36 Fabric Stack Panel	10	\$535.00	\$5,350.00
SF2242	22 X 42 Fabric Stack Panel	4	\$559.00	\$2,236.00
SF2248	22 X 48 Fabric Stack Panel	5	\$609.00	\$3,045.00
SG1830	18 X 30 Glass Stack Panel	4	\$885.00	\$3,540.00
SG1836	18 X 36 Glass Stack Panel	10	\$1,005.00	\$10,050.00
SG1842	18 X 42 Glass Stack Panel	4	\$1,135.00	\$4,540.00
SG1848	18 X 48 Glass Stack Panel	3	\$1,255.00	\$3,765.00

\$81,130.00 LIST TOTAL

\$40,565.00 PRICE PER STATION

Typical pricing is for reference only.
Pricing must be confirmed via official
Price Book or Customer Service.