

8X8 2-PACK

OPS2 PANEL SYSTEM TYPICAL

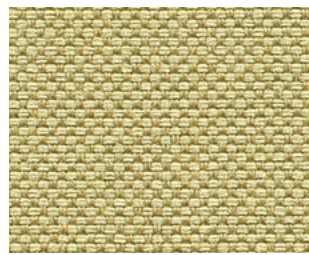


3D RENDERING

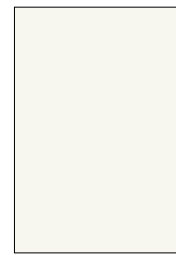
STATION SPECIFICATIONS

- OPS2 Panel System
- 2-Pack
- Monolithic & partial glazed stackers
- 53", 67" panel heights
- 8'x8'
- Overhead flipper door units & shelf
- BBF-FP storage pedestal
- FF-FP storage pedestal
- LED task lighting
- Paper management trays
- Base feed power
- 2 REC/Station
- Power down spine

FINISHES



PANEL FABRIC Cape Cod Keylime



SURFACE, PAINT & EDGE WF

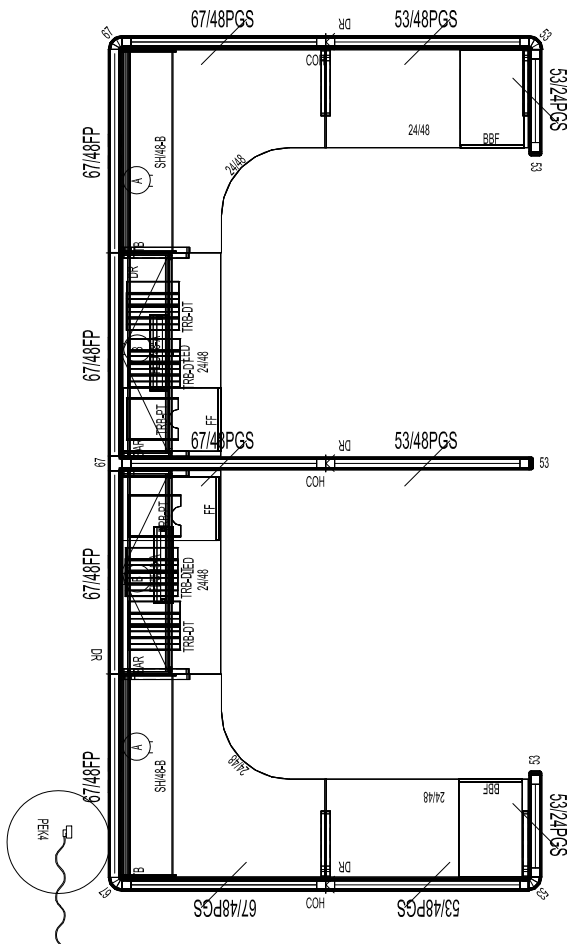
PRICING

See next page for full BOM.

\$30,298.00 LIST TOTAL

\$15,149.00 PRICE PER STATION

Typical pricing is for reference only.
Pricing must be confirmed via official Price Book or Customer Service.



2D PLAN LAYOUT

8X8 2-PACK

OPS2 PANEL SYSTEM TYPICAL



PRICING

Part Number	Part Description	Qty	List	Ext List
2WY53A2	53" - 2 WAY CONNECTOR	2	\$165.00	\$330.00
2WY67A2	67" - 2 WAY CONNECTOR	2	\$185.00	\$370.00
3WY67A2	67" - 3 WAY CONNECTOR	1	\$319.00	\$319.00
BBF-FP	BOX/BOX/FILE PEDESTAL FULL PULL 23"D W/O TOP	2	\$829.00	\$1658.00
CCWS484824	48 X 48 X 24 CURVILINEAR CORNER WORK SURFACE	2	\$685.00	\$1370.00
COH	CHANGE OF HEIGHT FILLER - PANEL TO PANEL	3	\$36.00	\$108.00
EC53A2	53" END CAP	3	\$75.00	\$225.00
F6748P	67 X 48 FABRIC PANEL - POWERED	4	\$1249.00	\$4996.00
FDU4812B	48 X 12 FLIPPER DOOR UNIT- B STYLE	2	\$665.00	\$1330.00
FF-FP	FILE/FILE PEDESTAL FULL PULL 23"D W/OUT TOP	2	\$829.00	\$1658.00
PEK4 (L OR R)	4 CIR. BASE POWER ENTRY KIT	1	\$545.00	\$545.00
PGSF5324-3914	53 (39-14) x 24 Fabric Glass Panel w/Base	2	\$1025.00	\$2050.00
PGSF5348-3914	53 (39-14) x 48 Fabric Glass Panel w/Base	3	\$1395.00	\$4185.00
PGSF6748-391414	67 (39-14-14) x 48 Fabric Stack Glass Panel w/Base	3	\$2139.00	\$6417.00
PTP48	48" PANEL TO PANEL CONNECTOR	3	\$31.00	\$93.00
PTP62	62" PANEL TO PANEL CONNECTOR	2	\$31.00	\$62.00
REC/A	A CIRCUIT DUPLEX RECEPTACLES	2	\$47.00	\$94.00
REC/B	B CIRCUIT DUPLEX RECEPTACLES	2	\$47.00	\$94.00
SH4812B	48 X 12 SHELF - B STYLE	2	\$245.00	\$490.00
TB48B	48" X 16" TACKBOARD- B STYLE	2	\$245.00	\$490.00
TLN-LED-S-1	LED Task Light w/ Motion Sensor and Power Supply	2	\$425.00	\$850.00
TRB48	TOOL RAIL BAR 48"	2	\$135.00	\$270.00
TRBDPT	DIAGONAL PAPER TRAY	4	\$115.00	\$460.00
TRBVPT	VERTICAL PAPER TRAY	2	\$67.00	\$134.00
WS2448	24 X 48 WORK SURFACE	4	\$425.00	\$1700.00

\$30,298.00 LIST TOTAL

\$15,149.00 PRICE PER STATION

Typical pricing is for reference only.
Pricing must be confirmed via official
Price Book or Customer Service.