

FREESTANDING 2-PACK

OPS2 PANEL SYSTEM TYPICAL



3D RENDERING

STATION SPECIFICATIONS

- OPS2 Panel System
- Freestanding 2-Pack
- 53", 67" panel height
- Shelf flipper door storage bins
- BBF-FP storage pedestal
- FF-FP storage pedestal
- Tackboard
- LED task lights
- Tool rail bar
- Paper trays
- Fabric work surface mounted screens
- Base feed power
- 2 REC/Station
- Power down spine

FINISHES



PANEL FABRIC Crosstown Stucco



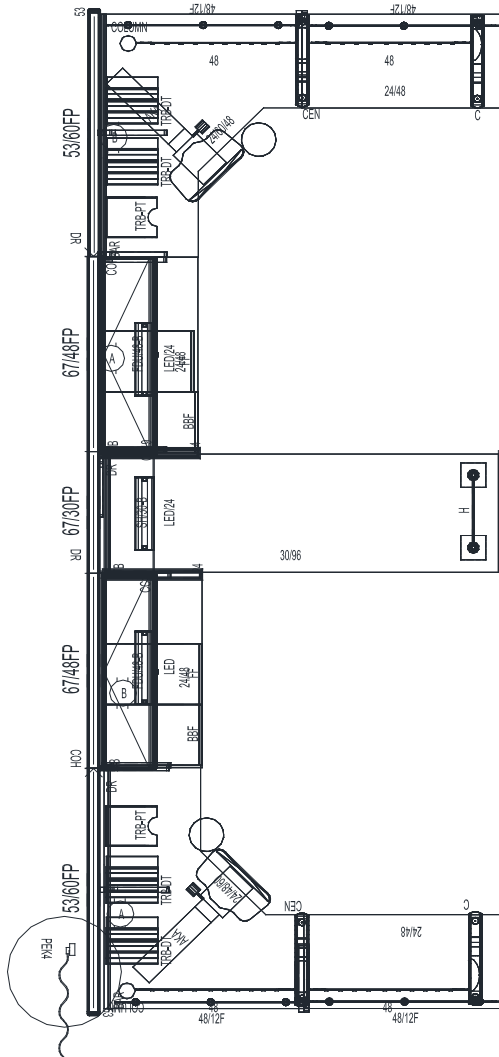
ACCENT FABRIC
Sprite Snow



ACCENT FABRIC
Streetwise Stop
Sign



PAINT, SURFACE & EDGE
WF



2D PLAN LAYOUT

PRICING

See next page for full BOM.

\$28,854.00 LIST TOTAL

\$14,427.00 PRICE PER STATION

Typical pricing is for reference only.
Pricing must be confirmed via official
Price Book or Customer Service.

FREESTANDING 2-PACK

OPS2 PANEL SYSTEM TYPICAL



PRICING

Part Number	Part Description	Qty	List	Ext List
3WY67A2	67" - 3 WAY CONNECTOR	2	\$319.00	\$638.00
AKAVALUEEXT	Value Ext Keyboard Set- Includes 23" Track Arm & 20" Tray w/ Wrist Rest & Swivel Mouse Tray	2	\$519.00	\$1038.00
BBF-FP	BOX/BOX/FILE PEDESTAL FULL PULL 23"D W/O TOP	2	\$829.00	\$1658.00
CENLEG	Center Leg	2	\$425.00	\$850.00
CLEGL	C-LEG (Left) FOR 24" WORK SURFACE, ACCEPTS MODESTY PANEL	2	\$425.00	\$850.00
COH	CHANGE OF HEIGHT FILLER - PANEL TO PANEL	2	\$36.00	\$72.00
CRNRBR- LEFT	CORNER BRACKET (SPEC L OR R)	2	\$12.00	\$24.00
CRNRBR- RIGHT	CORNER BRACKET (SPEC L OR R)	2	\$12.00	\$24.00
CRNRLEG	Corner Leg 90 Degree, Accepts Modesty Panel	2	\$349.00	\$698.00
EC32A2	32" END CAP	2	\$66.00	\$132.00
EC53A2	53" END CAP	2	\$75.00	\$150.00
ECWS482460L	48 X 24 X 60 CORNER WORK SURFACE - LEFT EXTENSION	1	\$999.00	\$999.00
ECWS482460R	48 X 24 X 60 CORNER WORK SURFACE - RIGHT EXTENSION	1	\$999.00	\$999.00
F3224	32 X 24 FABRIC PANEL - W/BASE	2	\$495.00	\$990.00
F5360P	53 X 60 FABRIC PANEL - POWERED	2	\$1335.00	\$2670.00
F6730P	67 X 30 FABRIC PANEL - POWERED	1	\$1029.00	\$1029.00
F6748P	67 X 48 FABRIC PANEL - POWERED	2	\$1249.00	\$2498.00
FDU4812B	48 X 12 FLIPPER DOOR UNIT- B STYLE	2	\$665.00	\$1330.00
FF-FP	FILE/FILE PEDESTAL FULL PULL 23"D W/OUT TOP	2	\$829.00	\$1658.00
HLEG30	H-Leg For 30" Worksurface	1	\$435.00	\$435.00
MODPNL48	37.5" Modesty Panel For 48" Worksurface	4	\$335.00	\$1340.00
PEK4 (L OR R)	4 CIR. BASE POWER ENTRY KIT	1	\$545.00	\$545.00
PGHM48.F	Panel Mount Fabric Screen 14H x 46W	4	\$455.00	\$1820.00
PTP48	48" PANEL TO PANEL CONNECTOR	2	\$31.00	\$62.00
R.CR	2" POST LEG	1	\$255.00	\$255.00
REC/A	A CIRCUIT DUPLEX RECEPTACLES	2	\$47.00	\$94.00
REC/B	B CIRCUIT DUPLEX RECEPTACLES	2	\$47.00	\$94.00
SH3012B	30 X 12 SHELF - B STYLE	1	\$209.00	\$209.00
TB30B	30" X 16" TACKBOARD- B STYLE	1	\$209.00	\$209.00
TB48B	48" X 16" TACKBOARD- B STYLE	2	\$245.00	\$490.00
TLN-LED-S-1	LED Task Light w/ Motion Sensor and Power Supply	3	\$425.00	\$1275.00
TRB60	TOOL RAIL BAR 60"	2	\$175.00	\$350.00
TRBDPT	DIAGONAL PAPER TRAY	4	\$115.00	\$460.00
TRBVPT	VERTICAL PAPER TRAY	2	\$67.00	\$134.00
VHF	VARIABLE HEIGHT FILLER - PANEL TO CONNECTOR	2	\$35.00	\$70.00
WS2448	24 X 48 WORK SURFACE	4	\$425.00	\$1700.00
WS3096	30 X 96 WORK SURFACE	1	\$1005.00	\$1005.00

\$28,854.00 LIST TOTAL

\$14,427.00 PRICE PER STATION

Typical pricing is for reference only.
Pricing must be confirmed via official
Price Book or Customer Service.