

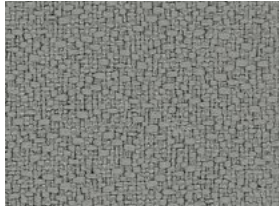
PANEL FABRICS SIGNATURE GRADE 2

NOTE: As digitally printed images, colors may vary from physical samples.
To request a sample of a finish shown on this card, please email samples@openplan.com.

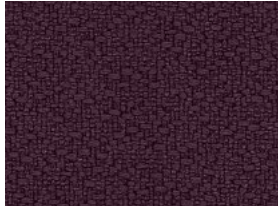


ANCHORAGE 2335

Additional Colors Available



Asteroid 2053



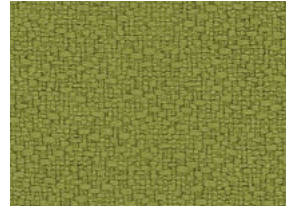
Aubergine 2036



Cobalt 2045



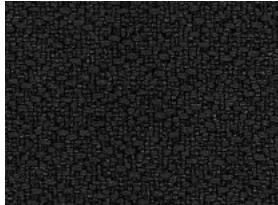
Goldenrod 2090



Green Apple 2087



Lemon 2839



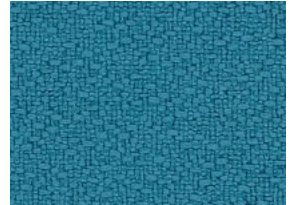
Onyx 2016



Poppy 2091



Turquoise 2841



Waterfall 2691

BAILEY 2299



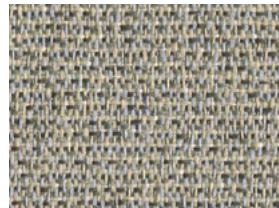
Allagash Mist 7040



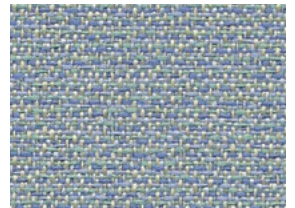
Baxter Beige 7011



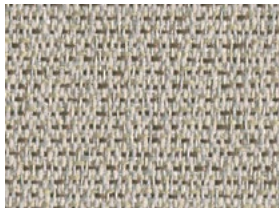
Belmont Silver 7010



Cave 7047



Kennebec Blue 7041



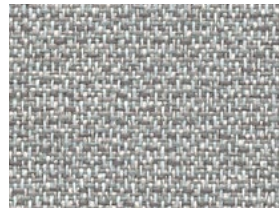
Khaki 7012



Paris Frost 7020



Platinum 7013

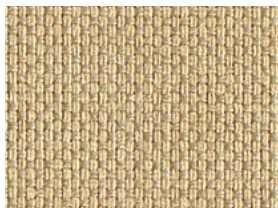


Sherman Pewter 7024

CAPE COD 3073



Apricot 7010



Buff 7011



Cloud 7030



Dune 7040



Key Lime 7050



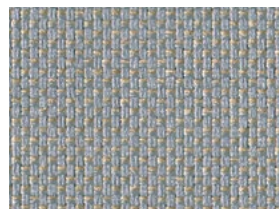
Linen 7031



Seagull 7072



Shale 7042



Surf 7062

PANEL FABRICS SIGNATURE GRADE 2

To request a sample of a fabric shown on this card, please email samples@openplan.com.



Style	Anchorage 2335	Bailey 2299	Cape Cod 3073
Content	35% Post-Consumer Recycled Polyester 65% Pre-Consumer Recycled Polyester	100% Pre-Consumer Recycled Polyester	24% Post-Consumer Recycled Polyester 76% Pre-Consumer Recycled Polyester
Weight	15.0 ± 1.0 oz / lin yd	8.3 ± 0.5 oz / lin yd	12.4 ± 1.0 oz / lin yd
Width	66"	66"	66"
Repeat	None	None	None
Treatment	None	Polyester Binder	Polyester Binder
Care			
Cleaning Code	W-S	W-S	W-S
Cleaning Suggestions	Clean with water based cleaning agents, foam or pure, water free solvents. Vacuuming or light brushing is recommended to prevent dust and soil buildup.	Clean with water based cleaning agents, foam or pure, water free solvents. Vacuuming or light brushing is recommended to prevent dust and soil buildup.	Clean with water based cleaning agents, foam or pure, water free solvents. Vacuuming or light brushing is recommended to prevent dust and soil buildup.
Performance			
Breaking Strength (ASTM D5034)	Warp: 275.0 lbf min. Fill: 275.0 lbf min.	Warp: 150.0 lbf min. Fill: 100.0 lbf min.	Warp: 150.0 lbf min. Fill: 150.0 lbf min.
Tear Strength (ASTM D2261)	Warp: 35.0 lbf min. Fill: 35.0 lbf min.	Warp: 15.0 lbf min. Fill: 15.0 lbf min.	Warp: 30.0 lbf min. Fill: 30.0 lbf min.
Colorfastness to Light (AATCC 16 Option 3)	40 hrs. Grade 4 min.	40 hrs. Grade 4 min.	40 hrs. Grade 4 min.
Colorfastness to Crocking (AATCC 8)	4.0 min. Dry 3.0 min. Wet	4.0 min. Dry 3.0 min. Wet	4.0 min. Dry 3.0 min. Wet
Flammability			
ASTM E-84	Class A or I	Class A or I	Class A or I

Every effort has been made to ensure color accuracy of the digital images, however, please order a sample before specification. Colors may vary between dye lots. These are directional fabrics. Application testing of these products is recommended.

Proudly woven in North America supporting our local communities.



This pattern is included in the underwriters laboratory panel fabric recognition program. Additional testing of this U.L. recognized fabric is not required on approved panels from participating manufacturers.



Terratex is a registered trademark of Duvaltex and designates fabrics that are made from 100% recycled or compostable material using increasingly sustainable manufacturing practices to produce a high quality product that is recyclable at the end of its useful life.



Guilford of Maine

PANEL FABRICS SIGNATURE GRADE 2

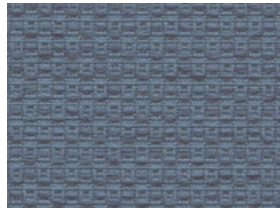
NOTE: As digitally printed images, colors may vary from physical samples.
To request a sample of a finish shown on this card, please email samples@openplan.com.



CHASE 2138 Additional Colors Available



Buff 1242



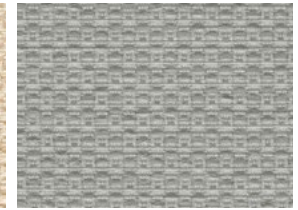
Chambray 1249



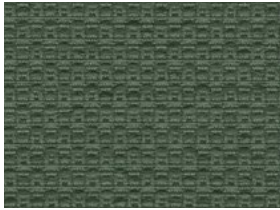
Coin 1243



Ecru 1241



Mist Green 1244



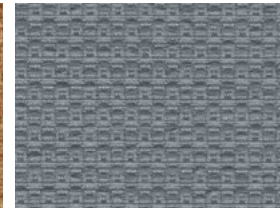
Moss 1250



Mushroom 1245



Ochre 1251



Pewter 1247



Red Clay 1252

CROSTOWN 2526 Additional Colors Available



Buff 080



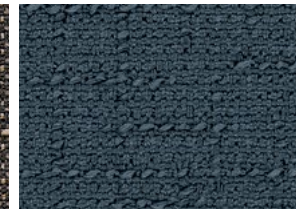
Cement 010



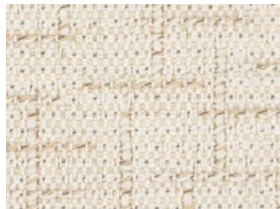
Fieldstone 060



Graphite 021



Mystic 020



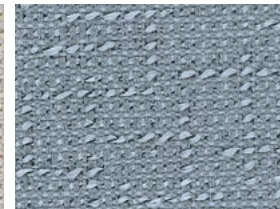
Ray 030



Ray 030



Sterling 061



Waterfront 040

DASHING 1204



Antique Sage 1045



Bespoke Tan 1046



Classic Silver 1041



Dapper Grey 1047



Genteel Beige 1043



Polished Slate 1044



Refined Marble 1042

PANEL FABRICS SIGNATURE GRADE 2

To request a sample of a fabric shown on this card, please email samples@openplan.com.



Style	Chase 2138	Crosstown 2526	Dashing 1204
Content	26% Post-Consumer Recycled Polyester 74% Pre-Consumer Recycled Polyester	23% Post-Consumer Recycled Polyester 77% Pre-Consumer Recycled Polyester	92% Post-Consumer Recycled Polyester 8% Pre-Consumer Recycled Polyester
Weight	13.3 ± 1.0 oz / lin yd	13.6 ± 1.0 oz / lin yd	10.9 ± 1.0 oz / lin yd
Width	66"	66"	66"
Repeat	None	12.5" Vertical, 16.2" Horizontal	2" Vertical, 2.4" Horizontal
Treatment	Polyester binder	None	None
Care			
Cleaning Code	W-S	W-S	W-S
Cleaning Suggestions	Clean with water based cleaning agents, foam or pure, water free solvents. Vacuuming or light brushing is recommended to prevent dust and soil buildup.	Clean with water based cleaning agents, foam or pure, water free solvents. Vacuuming or light brushing is recommended to prevent dust and soil buildup.	Clean with water based cleaning agents, foam or pure, water free solvents. Vacuuming or light brushing is recommended to prevent dust and soil buildup.
Performance			
Breaking Strength (ASTM D5034)	Warp: 280.0 lbf min. Fill: 200.0 lbf min.	Warp: 250.0 lbf min. Fill: 150.0 lbf min.	Warp: 240.0 lbf min. Fill: 190.0 lbf min.
Tear Strength (ASTM D2261)	Not tested	Warp: 35.0 lbf min. Fill: 25.0 lbf min.	Warp: 25.0 lbf min. Fill: 40.0 lbf min.
Colorfastness to Light (AATCC 16 Option 3)	40 hrs. Grade 4 min.	40 hrs. Grade 4 min.	40 hrs. Grade 4 min.
Colorfastness to Crocking (AATCC 8)	4.0 min. Dry 3.0 min. Wet	4.0 min. Dry 3.0 min. Wet	4.0 min. Dry 3.0 min. Wet
Flammability			
ASTM E-84	Class A or I	Class A or I	Class A or I

Every effort has been made to ensure color accuracy of the digital images, however, please order a sample before specification. Colors may vary between dye lots. These are directional fabrics. Application testing of these products is recommended.

Proudly woven in North America supporting our local communities.



This pattern is included in the underwriters laboratory panel fabric recognition program. Additional testing of this U.L. recognized fabric is not required on approved panels from participating manufacturers.



Terratex is a registered trademark of Duvaltex and designates fabrics that are made from 100% recycled or compostable material using increasingly sustainable manufacturing practices to produce a high quality product that is recyclable at the end of its useful life.



Guilford of Maine

PANEL FABRICS SIGNATURE GRADE 2

NOTE: As digitally printed images, colors may vary from physical samples.
To request a sample of a finish shown on this card, please email samples@openplan.com.



DRIFT 2539



Alabaster 020



Chamois 031



Graphite 040



Mocha 032



Pebble 010



Slate 050



Sprout 030



Storm 041

FR701 2100 Additional Colors Available



Blue Plum 553



Claret Accent 418



Eggshell 144



Iris 798



Medium Grey 298



Silver Papier 538



Steel Grey 471



Sunshine 797

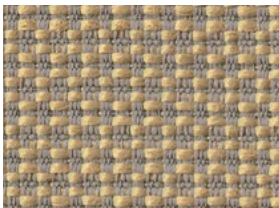


Ultramarine 470



Verte Papier 561

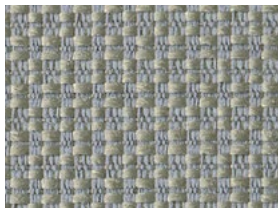
INTERMIX 3035



Butter Rum 7050



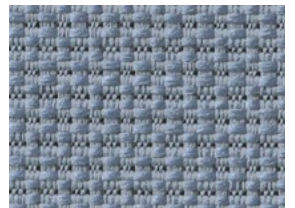
Coconut 7011



Foggy 7041



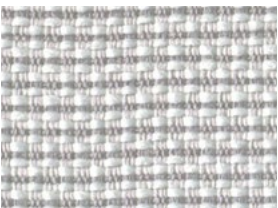
Husky 7060



Neptune 7040



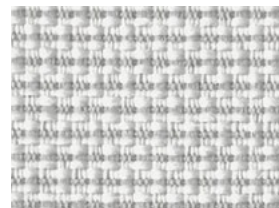
Rocket Ship 7010



Seagull 7030



Smokey Quartz 7061



Swan 7020

PANEL FABRICS SIGNATURE GRADE 2

To request a sample of a fabric shown on this card, please email samples@openplan.com.



Style	Drift 2539	FR701® 2100	Intermix 3035
Content	51% Post-Consumer Recycled Polyester 49% Pre-Consumer Recycled Polyester	100% Post-Consumer Recycled Polyester	100% Pre-Consumer Recycled Polyester
Weight	12.0 ± 1.0 oz / lin yd	16.0 ± 0.5 oz / lin yd	15.3 ± 1.0 oz / lin yd
Width	66"	66"	66"
Repeat	9.6" Vertical, 14" Horizontal	None	None
Treatment	None	None	Polyester binder
Care			
Cleaning Code	W-S	W-S	W-S
Cleaning Suggestions	Clean with water based cleaning agents, foam or pure, water free solvents. Vacuuming or light brushing is recommended to prevent dust and soil buildup.	Clean with water based cleaning agents, foam or pure, water free solvents. Vacuuming or light brushing is recommended to prevent dust and soil buildup.	Clean with water based cleaning agents, foam or pure, water free solvents. Vacuuming or light brushing is recommended to prevent dust and soil buildup.
Performance			
Breaking Strength (ASTM D5034)	Warp: 250.0 lbf min. Fill: 125.0 lbf min.	Warp: 150.0 lbf min. Fill: 150.0 lbf min.	Warp: 225.0 lbf min. Fill: 225.0 lbf min.
Tear Strength (ASTM D2261)	Warp: 15.0 lbf min. Fill: 15.0 lbf min.	Warp: 30.0 lbf min. Fill: 30.0 lbf min.	Not tested
Colorfastness to Light (AATCC 16 Option 3)	40 hrs. Grade 4 min.	40 hrs. Grade 4 min.	40 hrs. Grade 4 min.
Colorfastness to Crocking (AATCC 8)	4.0 min. Dry 3.0 min. Wet	4.0 min. Dry 3.0 min. Wet	4.0 min. Dry 3.0 min. Wet
Flammability			
ASTM E-84	Class A or I	Class A or I	Class A or I

Every effort has been made to ensure color accuracy of the digital images, however, please order a sample before specification. Colors may vary between dye lots. These are directional fabrics. Application testing of these products is recommended.

Proudly woven in North America supporting our local communities.



This pattern is included in the underwriters laboratory panel fabric recognition program. Additional testing of this U.L. recognized fabric is not required on approved panels from participating manufacturers.



Terratex is a registered trademark of Duvaltex and designates fabrics that are made from 100% recycled or compostable material using increasingly sustainable manufacturing practices to produce a high quality product that is recyclable at the end of its useful life.



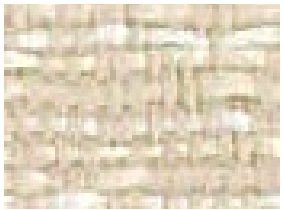
Guilford of Maine

PANEL FABRICS SIGNATURE GRADE 2

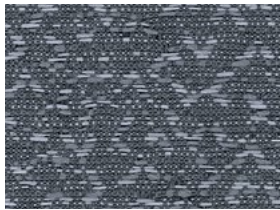
NOTE: As digitally printed images, colors may vary from physical samples.
To request a sample of a finish shown on this card, please email samples@openplan.com.



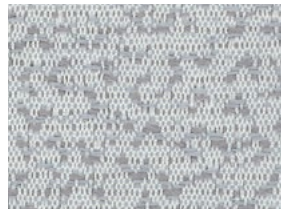
MINGLE 2527



Biscuit 090



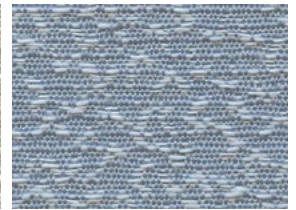
Carbon 010



Crystal 060



Custard 061



Frost 051



Green Tea 040



Wheatberry 041



Winter 070

RATTAN 3087



Alabaster 021



Graphite 060



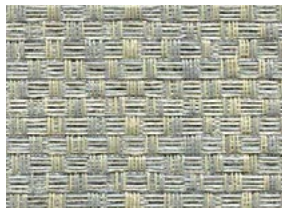
Harvest 030



Ivory 010



Mercury 020



Sky 051



Spring 070



Storm 050



Tuscan 040

REEDS 3078

Additional Colors Available



Bisque 010



Greystone 020



Iron 030



Maize 040



Mink 050



Moss 051



Sand 041

PANEL FABRICS SIGNATURE GRADE 2

To request a sample of a fabric shown on this card, please email samples@openplan.com.



Style	Mingle 2527	Rattan 3087	Reeds 3078
Content	23% Post-Consumer Recycled Polyester	34% Post-Consumer Recycled Polyester	74% Post-Consumer Recycled Polyester
	77% Pre-Consumer Recycled Polyester	66% Pre-Consumer Recycled Polyester	26% Pre-Consumer Recycled Polyester
Weight	10.9 ± 1.0 oz / lin yd	14.7 ± 0.5 oz / lin yd	11.6 ± 1.0 oz / lin yd
Width	66"	66"	66"
Repeat	16.7" Vertical, 16.2" Horizontal	17.7" Vertical, 13.9" Horizontal	12.5" Vertical, 16.9" Horizontal
Treatment	None	None	None
Care			
Cleaning Code	W-S	W-S	W-S
Cleaning Suggestions	Clean with water based cleaning agents, foam or pure, water free solvents. Vacuuming or light brushing is recommended to prevent dust and soil buildup.	Clean with water based cleaning agents, foam or pure, water free solvents. Vacuuming or light brushing is recommended to prevent dust and soil buildup.	Clean with water based cleaning agents, foam or pure, water free solvents. Vacuuming or light brushing is recommended to prevent dust and soil buildup.
Performance			
Breaking Strength (ASTM D5034)	Warp: 250.0 lbf min. Fill: 100.0 lbf min.	Warp: 225.0 lbf min. Fill: 200.0 lbf min.	Warp: 250.0 lbf min. Fill: 150.0 lbf min.
Tear Strength (ASTM D2261)	Warp: 25.0 lbf min. Fill: 15.0 lbf min.	Warp: 35.0 lbf min. Fill: 35.0 lbf min.	Warp: 20.0 lbf min. Fill: 20.0 lbf min.
Colorfastness to Light (AATCC 16 Option 3)	40 hrs. Grade 4 min.	40 hrs. Grade 4 min.	40 hrs. Grade 4 min.
Colorfastness to Crocking (AATCC 8)	4.0 min. Dry 3.0 min. Wet	4.0 min. Dry 3.0 min. Wet	4.0 min. Dry 3.0 min. Wet
Flammability			
ASTM E-84	Class A or I	Class A or I	Class A or I

Every effort has been made to ensure color accuracy of the digital images, however, please order a sample before specification. Colors may vary between dye lots. These are directional fabrics. Application testing of these products is recommended.

Proudly woven in North America supporting our local communities.



This pattern is included in the underwriters laboratory panel fabric recognition program. Additional testing of this U.L. recognized fabric is not required on approved panels from participating manufacturers.



Terratex is a registered trademark of Duvaltex and designates fabrics that are made from 100% recycled or compostable material using increasingly sustainable manufacturing practices to produce a high quality product that is recyclable at the end of its useful life.

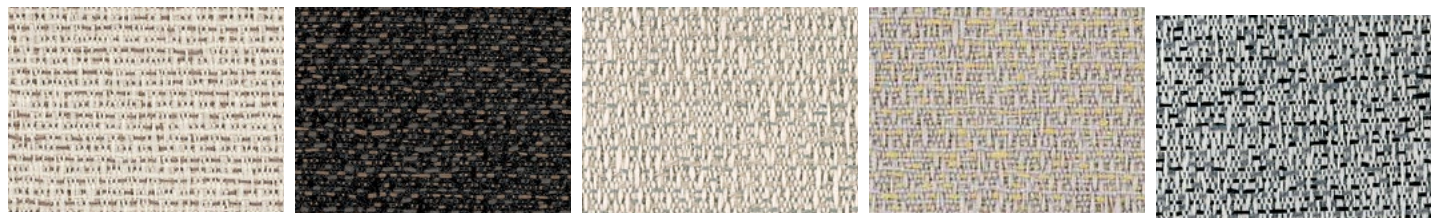


Guilford of Maine

PANEL FABRICS SIGNATURE GRADE 2

NOTE: As digitally printed images, colors may vary from physical samples.
To request a sample of a finish shown on this card, please email samples@openplan.com.

SPINEL 3582 Additional Colors Available



Alabaster 058

Obsidian 021

Opal 021

Perlite 080

Petosky 056



Quarry 091

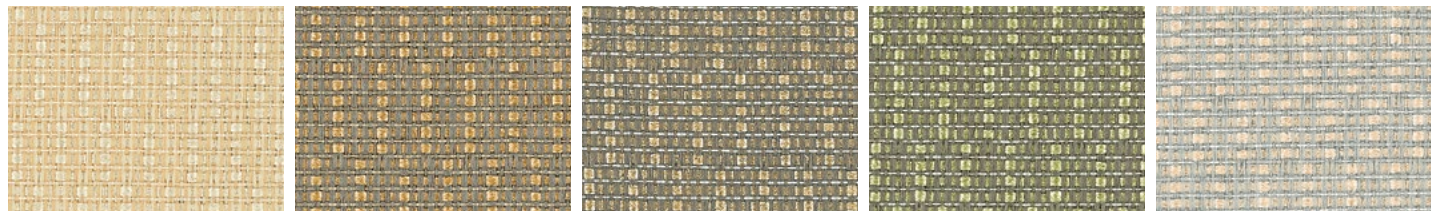
Sandstone 050

Slate 130

Smokey Quartz 031

Tiger Eye 030

SPRITE 2671 Also available in Grade 1 when combined with Grade 1 options and finishes



Butter 7020

Harvest 7032

Khaki 7030

Kiwi 7031

Linen 7010



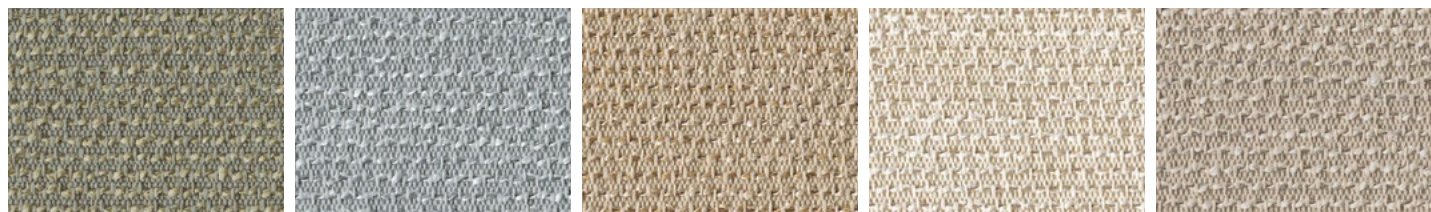
Powder 7011

Sherbert 7012

Sky 7033

Snow 7040

STRATA 2968 Also available in Grade 1 when combined with Grade 1 options and finishes



Cement 060

Cloud 040

Latte 031

Linen 010

Sand 030



Sea 070

Sky 050

Straw 020

PANEL FABRICS SIGNATURE GRADE 2

To request a sample of a fabric shown on this card, please email samples@openplan.com.



Style	Spinel 3582	Sprite 2671	Strata 2968
Content	32% Post-Consumer Recycled Polyester 68% Pre-Consumer Recycled Polyester	5% Post-Consumer Recycled Polyester 95% Pre-Consumer Recycled Polyester	100% Pre-Consumer Recycled Polyester
Weight	11.8 ± 1.0 oz / lin yd	10.8 ± 0.5 oz / lin yd	11.8 ± 1.0 oz / lin yd
Width	66"	66"	66"
Repeat	16.5" Vertical and Horizontal	.83" Vertical, .26" Horizontal	.1" Vertical, None Horizontal
Treatment	None	Polyester Binder	None
Care			
Cleaning Code	W-S	W-S	W-S
Cleaning Suggestions	Clean with water based cleaning agents, foam or pure, water free solvents. Vacuuming or light brushing is recommended to prevent dust and soil buildup.	Clean with water based cleaning agents, foam or pure, water free solvents. Vacuuming or light brushing is recommended to prevent dust and soil buildup.	Clean with water based cleaning agents, foam or pure, water free solvents. Vacuuming or light brushing is recommended to prevent dust and soil buildup.
Performance			
Breaking Strength (ASTM D5034)	Warp: 220.0 lbf min. Fill: 90.0 lbf min.	Warp: 175.0 lbf min. Fill: 175.0 lbf min.	Warp: 200.0 lbf min. Fill: 100.0 lbf min.
Tear Strength (ASTM D2261)	Warp: 18.0 lbf min. Fill: 18.0 lbf min.	Warp: 35.0 lbf min. Fill: 25.0 lbf min.	Warp: 20.0 lbf min. Fill: 20.0 lbf min.
Colorfastness to Light (AATCC 16 Option 3)	40 hrs. Grade 4 min.	40 hrs. Grade 4 min.	40 hrs. Grade 4 min.
Colorfastness to Crocking (AATCC 8)	4.0 min. Dry 3.0 min. Wet	4.0 min. Dry 3.0 min. Wet	4.0 min. Dry 3.0 min. Wet
Flammability			
ASTM E-84	Class A or I	Class A or I	Class A or I

Every effort has been made to ensure color accuracy of the digital images, however, please order a sample before specification. Colors may vary between dye lots. These are directional fabrics. Application testing of these products is recommended.

Proudly woven in North America supporting our local communities.



This pattern is included in the underwriters laboratory panel fabric recognition program. Additional testing of this U.L. recognized fabric is not required on approved panels from participating manufacturers.



Terratex is a registered trademark of Duvaltex and designates fabrics that are made from 100% recycled or compostable material using increasingly sustainable manufacturing practices to produce a high quality product that is recyclable at the end of its useful life.



Guilford of Maine

PANEL FABRICS SIGNATURE GRADE 2

NOTE: As digitally printed images, colors may vary from physical samples.
To request a sample of a finish shown on this card, please email samples@openplan.com.



TWEED 2737

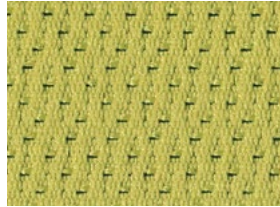
Additional Colors Available



Bleach White 2766



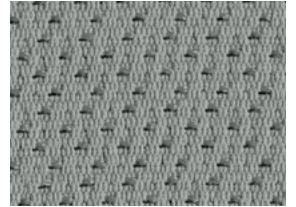
Concrete 2144



Leaf 2772



Lipstick 2770



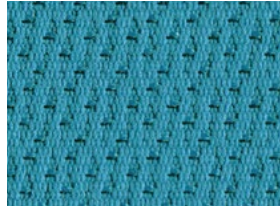
Metal 2193



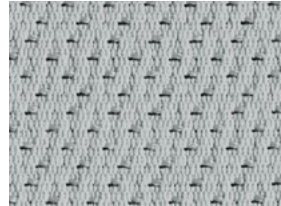
Orange 2767



Royal Blue 2771



Spa 2773



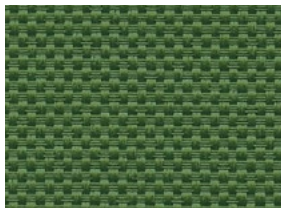
Stainless 2795



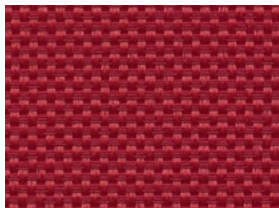
Wheat 2187

WHISPER 1240

Additional Colors Available



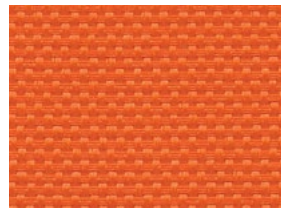
Baffle 1292



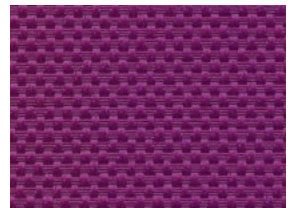
Chant 1295



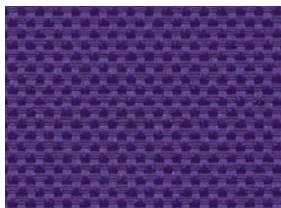
Cloud 1288



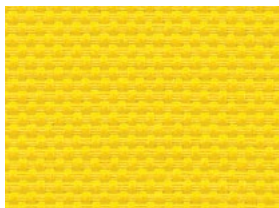
Mellow 1293



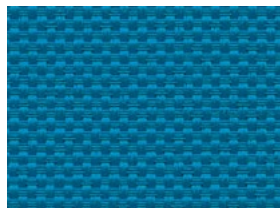
Mum 1297



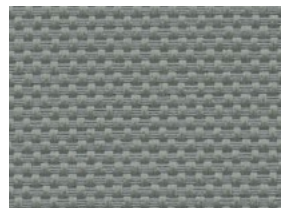
Mystery 1299



Peep 1291



Placid 1294



Quiet 1286



Spirit 8888

PANEL FABRICS SIGNATURE GRADE 2

To request a sample of a fabric shown on this card, please email samples@openplan.com.



Style	Tweed 2737	Whisper 1240
Content	25% Post-Consumer Recycled Polyester 75% Pre-Consumer Recycled Polyester	53% Post-Consumer Recycled Polyester 47% Polyester
Weight	11.7 ± 1.0 oz / lin yd	10.9 ± 1.0 oz / lin yd
Width	66"	66"
Repeat	None	None
Treatment	None	None
Care		
Cleaning Code	W-S	W-S
Cleaning Suggestions	Clean with water based cleaning agents, foam or pure, water free solvents. Vacuuming or light brushing is recommended to prevent dust and soil buildup.	Clean with water based cleaning agents, foam or pure, water free solvents. Vacuuming or light brushing is recommended to prevent dust and soil buildup.
Performance		
Breaking Strength (ASTM D5034)	Warp: 225.0 lbf min. Fill: 175.0 lbf min.	Warp: 270.0 lbf min. Fill: 150.0 lbf min.
Tear Strength (ASTM D2261)	Warp: 30.0 lbf min. Fill: 35.0 lbf min.	Warp: 30.0 lbf min. Fill: 20.0 lbf min.
Colorfastness to Light (AATCC 16 Option 3)	40 hrs. Grade 4 min.	40 hrs. Grade 4 min.
Colorfastness to Crocking (AATCC 8)	4.0 min. Dry 3.0 min. Wet	4.0 min. Dry 3.0 min. Wet
Flammability		
ASTM E-84	Class A or I	Class A or I

Every effort has been made to ensure color accuracy of the digital images, however, please order a sample before specification. Colors may vary between dye lots. These are directional fabrics. Application testing of these products is recommended.

Proudly woven in North America supporting our local communities.



This pattern is included in the underwriters laboratory panel fabric recognition program. Additional testing of this U.L. recognized fabric is not required on approved panels from participating manufacturers.



Terratex is a registered trademark of Duvaltex and designates fabrics that are made from 100% recycled or compostable material using increasingly sustainable manufacturing practices to produce a high quality product that is recyclable at the end of its useful life.



Guilford of Maine

PANEL FABRICS SIGNATURE GRADE 2

NOTE: As digitally printed images, colors may vary from physical samples.
To request a sample of a finish shown on this card, please email samples@openplan.com.



ACE Additional Colors Available



Apricot 1010531

Azure 1010524

Biscotti 1010539

Chili 1010532

Dove 1010537



Drizzle 1010528

Falcon 1010353

Midnight 1010525

Platinum 1010536

Surf 1010526

AXIS



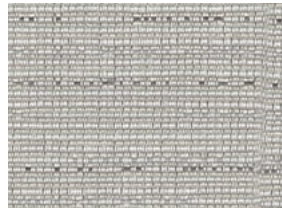
Bluestone 1009362

Chambray 1009361

Dune 1009359

Fossil 1009363

Sepia 1009364



Silver 1009360

BANTER



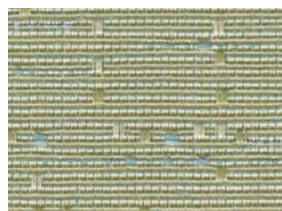
Crystal 1010615

Greystone 1010617

Honeycomb 1010612

Pearl 1010610

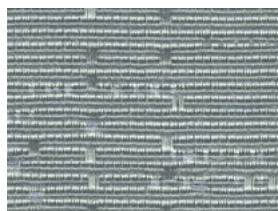
Sahara 1010611



Seaglass 1010613



Sterling 1010616



Topaz 1010614

PANEL FABRICS SIGNATURE GRADE 2

To request a sample of a fabric shown on this card, please email samples@openplan.com.



Style	Ace	Axis	Banter
Content	59% Post Consumer Recycled Polyester 41% Polyester,	56% Post Industrial Recycled Polyester, 44% Post Consumer Recycled Polyester	35% Post Industrial Recycled Polyester, 36% Post Consumer Recycled Polyester, 2% Polyester
Weight	11.4 oz / lin yd	10 oz / lin yd	11.5 oz / lin yd
Width	66"	66"	66"
Repeat	None	None	35.172" V 17.125" H
Treatment	None	None	None
Care			
Cleaning Code	W-S	W-S	W-S
Cleaning Suggestions	Clean with water based cleaning agents, foam or pure, water free solvents. Vacuuming or light brushing is recommended to prevent dust and soil buildup.	Clean with water based cleaning agents, foam or pure, water free solvents. Vacuuming or light brushing is recommended to prevent dust and soil buildup.	Clean with water based cleaning agents, foam or pure, water free solvents. Vacuuming or light brushing is recommended to prevent dust and soil buildup.
Performance			
Breaking Strength (ASTM D5034)	Warp: 209.0 lbs. Fill: 236.0 lbs.	Warp: 61.0 lbs. Fill: 78.0 lbs.	Warp: 284.0 lbs. Fill: 142.0 lbs.
Tear Strength (ASTM D2261)	Warp: 18.5 lbs. Fill: 23.7 lbs.	Warp: 16 lbs. Fill: 23 lbs.	Warp: 27.0 lbs. Fill: 24.0 lbs.
Colorfastness to Light (AATCC 16 Option 3)	40 hrs. Class 4	40 hrs. Class 4	40 hrs. Class 4
Colorfastness to Crocking (AATCC 8)	4.0 Dry, 4.0 Wet	4.0 Dry, 3.0 Wet	4.0 Dry, 3.0 Wet
Flammability			
ASTM E-84	Class 1	Class A or 1	Class A or 1

Every effort has been made to ensure color accuracy of the digital images, however, please order a sample before specification. Colors may vary between dye lots. These are directional fabrics. Application testing of these products is recommended.

Proudly woven in North America supporting our local communities.



This pattern is included in the underwriters laboratory panel fabric recognition program. Additional testing of this U.L. recognized fabric is not required on approved panels from participating manufacturers.



Terratex is a registered trademark of Duvaltex and designates fabrics that are made from 100% recycled or compostable material using increasingly sustainable manufacturing practices to produce a high quality product that is recyclable at the end of its useful life.

Burch

PANEL FABRICS SIGNATURE GRADE 2

NOTE: As digitally printed images, colors may vary from physical samples.
To request a sample of a finish shown on this card, please email samples@openplan.com.



CENTURY Also available in Grade 1 when combined with Grade 1 options and finishes



Amber 7177



Aspen 7176



Atlantic 7180



Dew 7178



Driftwood 7181



Fossil 7179

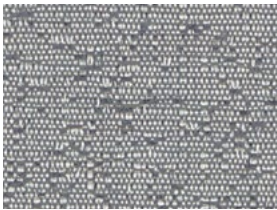


Limestone 7183



Oro 7182

HINGE



Azure 1009376



Earl Grey 1009373



Ecru 1009372



Mink 1009374



Pearl 1009371



Shale 1009375

MIDWAY Also available in Grade 1 when combined with Grade 1 options and finishes



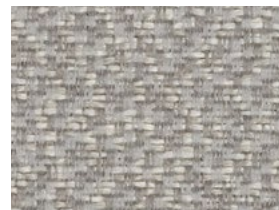
Almond 7238



Chambray 7244



Flint 7245



Haze 7246



Mineral 7237



Oasis 7243



Opal 7240



Rye 7241



Saddle 7242



Wheat 7239

PANEL FABRICS SIGNATURE GRADE 2


To request a sample of a fabric shown on this card, please email samples@openplan.com.





Style	Century	Hinge	Midway
Content	100% Polyester	43% Post Industrial Recycled Polyester 34% Polyester 23% Post Consumer Recycled Polyester	100% Polyester
Weight	12.6 oz / lin yd	11.5 oz / lin yd	10.65 oz / lin yd
Width	66"	66"	66"
Repeat	N/A	N/A	N/A
Treatment	None	None	None
Care			
Cleaning Code	W-S	W-S	W-S
Cleaning Suggestions	Clean with water based cleaning agents, foam or pure, water free solvents. Vacuuming or light brushing is recommended to prevent dust and soil buildup.	Clean with water based cleaning agents, foam or pure, water free solvents. Vacuuming or light brushing is recommended to prevent dust and soil buildup.	Clean with water based cleaning agents, foam or pure, water free solvents. Vacuuming or light brushing is recommended to prevent dust and soil buildup.
Performance			
Breaking Strength (ASTM D5034)	Warp: 249.0 lbs. Fill: 248.0 lbs.	Warp: 100.0 lbs. Fill: 115.0 lbs.	Warp: 212.0 lbs. Fill: 151.0 lbs.
Tear Strength (ASTM D2261)	Warp: 23.3 lbs. Fill: 30.2 lbs.	Warp: 28 lbs. Fill: 43 lbs.	Warp: 37.5 lbs. Fill: 61.3 lbs.
Colorfastness to Light (AATCC 16 Option 3)	40 hrs. Class 4.5	40 hrs. Class 4	40 hrs. Class 4
Colorfastness to Crocking (AATCC 8)	4.5 Dry, 5.0 Wet	4.0 Dry 3.0 Wet	4.5 Dry 4.5 Wet
Flammability			
ASTM E-84	Class A or 1	Class A or 1	Class A or 1

Every effort has been made to ensure color accuracy of the digital images, however, please order a sample before specification. Colors may vary between dye lots. These are directional fabrics. Application testing of these products is recommended.

Proudly woven in North America supporting our local communities.

 Hinge and Midway are directional fabrics. Please use caution when cutting and applying.

 This pattern is included in the underwriters laboratory panel fabric recognition program. Additional testing of this U.L. recognized fabric is not required on approved panels from participating manufacturers.

 Terratex is a registered trademark of Duvaltex and designates fabrics that are made from 100% recycled or compostable material using increasingly sustainable manufacturing practices to produce a high quality product that is recyclable at the end of its useful life.

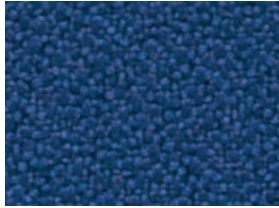
Burch

PANEL FABRICS SIGNATURE GRADE 2

NOTE: As digitally printed images, colors may vary from physical samples.
To request a sample of a finish shown on this card, please email samples@openplan.com.



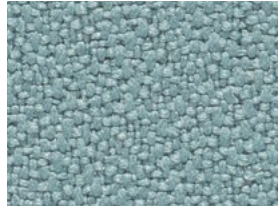
PRIME TIME Select fabrics also available in Grade 1 when combined with Grade 1 options and finishes Additional Colors Available



Azure 1010091



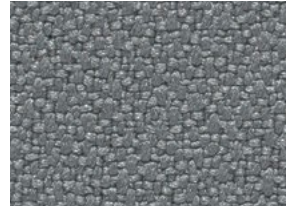
Brownie 1010099



Chambray 1010094



Chino 1010107



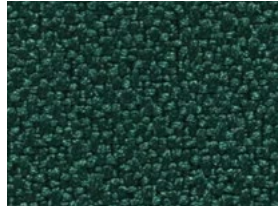
Elephant 1010102



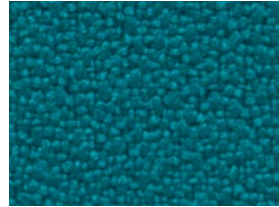
Paprika 1010084



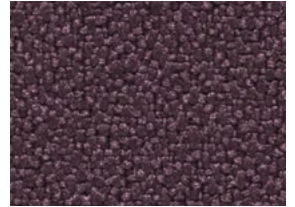
Scarlet 1010086



Spruce 1010098



Tropic 1010093



Violet 1010088

TRACTION Also available in Grade 1 when combined with Grade 1 options and finishes



Chrome 7759



Earth 7757



Greystone 7758



Jute 7754



Platinum 7753



Wheat 7756

UNISON



Ecru 7317



Flint 7314



Halo 7316



Haze 7315



Putty 7318



Suede 7313

PANEL FABRICS SIGNATURE GRADE 2

To request a sample of a fabric shown on this card, please email samples@openplan.com.



Style	Prime Time	Traction*	Unison
Content	100% Post Consumer Recycled Polyester	100% Polyester	50% Post Industrial Recycled Polyester 27% Post Consumer Recycled Polyester, 23% Polyester
Weight	15.0 oz / lin yd	11.7 oz / lin yd	10.8 oz / lin yd
Width	66"	66"	66"
Repeat	N/A	N/A	N/A
Treatment	None	None	None
Care			
Cleaning Code	W-S	W-S	W-S
Cleaning Suggestions	Clean with water based cleaning agents, foam or pure, water free solvents. Vacuuming or light brushing is recommended to prevent dust and soil buildup.	Clean with water based cleaning agents, foam or pure, water free solvents. Vacuuming or light brushing is recommended to prevent dust and soil buildup.	Clean with water based cleaning agents, foam or pure, water free solvents. Vacuuming or light brushing is recommended to prevent dust and soil buildup.
Performance			
Breaking Strength (ASTM D5034)	Warp: 325.0 lbs. Fill: 275.0 lbs.	Warp: 281.0 lbs. Fill: 181.0 lbs.	Warp: 227.0 lbs. Fill: 171.0 lbs.
Tear Strength (ASTM D2261)	Warp: 48.0 lbs. Fill: 53.0 lbs.	Warp: 29.7 lbs. Fill: 31.4 lbs.	Warp: 21.0 lbs. Fill: 41.0 lbs.
Colorfastness to Light (AATCC 16 Option 3)	40 hrs. Class 4.5	40 hrs. Class 5	40 hrs. Class 4
Colorfastness to Crocking (AATCC 8)	4.5 Dry, 4.5 Wet	5.0 Dry, 5.0 Wet	4.0 Dry, 3.0 Wet
Flammability			
ASTM E-84	Class A or 1	Class A or 1	Class A or 1

Every effort has been made to ensure color accuracy of the digital images, however, please order a sample before specification. Colors may vary between dye lots. These are directional fabrics. Application testing of these products is recommended.

Proudly woven in North America supporting our local communities.

* Traction is lightly backed



Traction is a directional fabric. Please use caution when cutting and applying.



This pattern is included in the underwriters laboratory panel fabric recognition program. Additional testing of this U.L. recognized fabric is not required on approved panels from participating manufacturers.



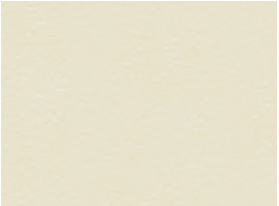






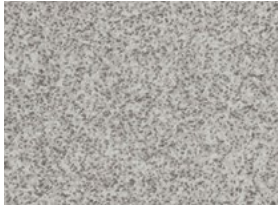




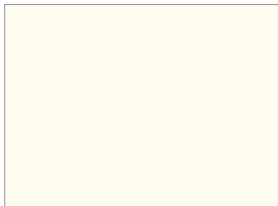


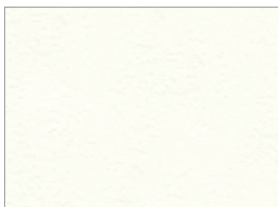

Terratex is a registered trademark of Duvaltex and designates fabrics that are made from 100% recycled or compostable material using increasingly sustainable manufacturing practices to produce a high quality product that is recyclable at the end of its useful life.

Burch

WORK SURFACES SIGNATURE GRADE 2

NOTE: As digitally printed images, colors may vary from physical samples.
To request a sample of a finish shown on this card, please email samples@openplan.com.



WORK SURFACES					Standard - Low Pressure Laminates (LPL)
					
Antique White (G1/7D)	Beige Pampas	Buka Bark (+)	Desert Zephyr	Empire Mahogany (+)	
					
Fog (G1)	Folkstone Grey (G1/7D)	Grey Nebula	Hardrock Maple (G1/7D/+)	Henna Cherry (+)	
					
HF	LT	McKinley White (G1)	Monticello Maple (+)	Satin Stainless	
					
Shadow Ridge (+)	White Cypress (+)	White Frost	White Nebula (G1/7D)		

(G1): Eligible for Signature Grade 1 Program when combined with Signature Grade 1 Program options and finishes.

(7D): Eligible for 7 Day Program when combined with 7 Day Program options and finishes.

(+): Work surface is grained.

All work surfaces are eligible for the Signature Grade 2 Program.

2% LESS DISCOUNT FOR CUSTOM LAMINATES: Nevamar and Wilsonart (not Hi-Gloss), Arborite, Formica

4% LESS DISCOUNT FOR CUSTOM LAMINATES: Pionite- Wilsonart Hi-Gloss- 35 & 45 Finish and Wilsonart High Definition- 55 Finish

Minimum waste fees may apply.



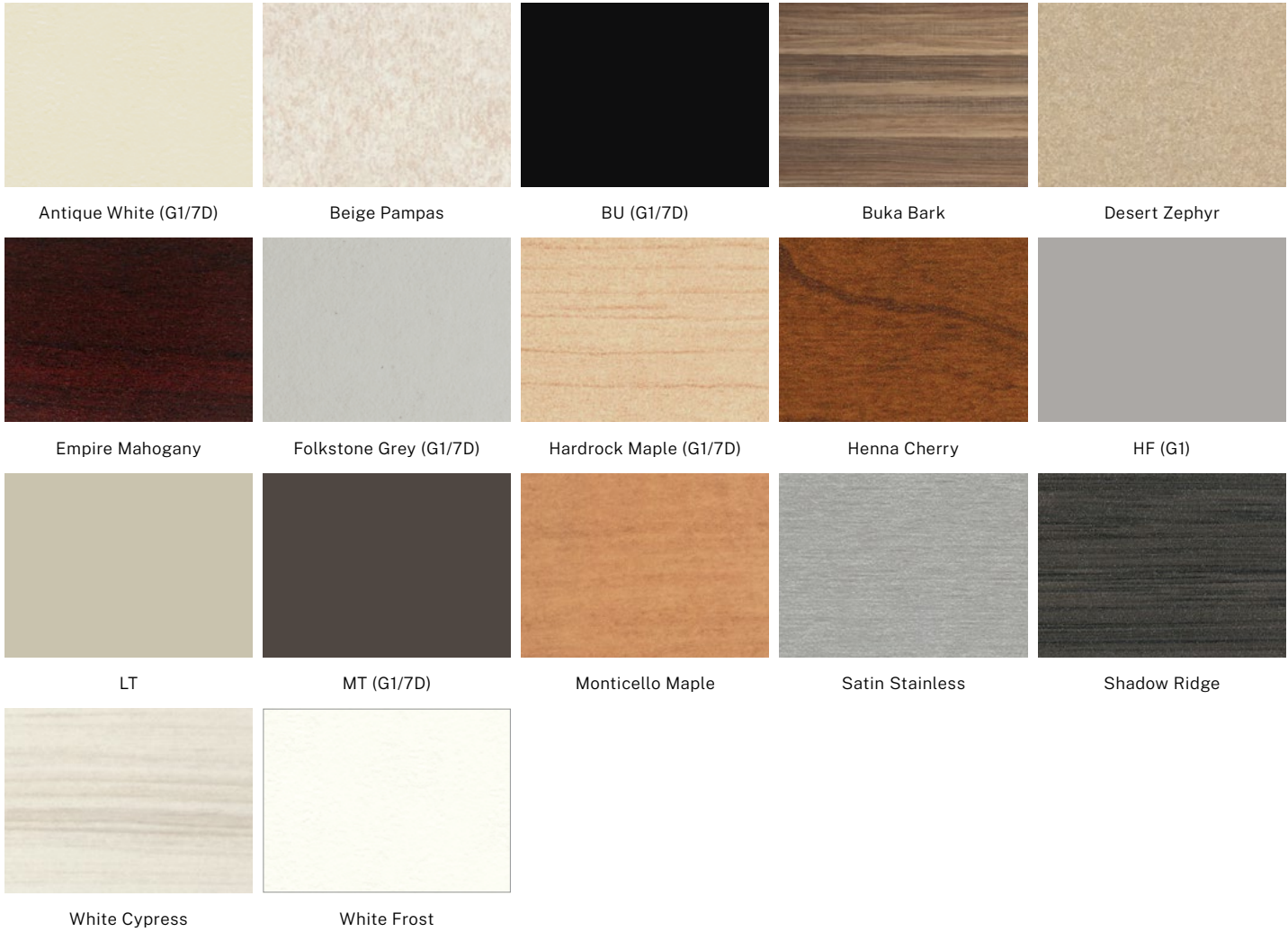
OPS laminates and panel cores comply with the formaldehyde emission standards specified in US EPA TSCA Title VI (40 C.F.R. Par 770.10) and CARB ATCM 93120.2(A) Phase 2.

FINISHES SIGNATURE GRADE 2

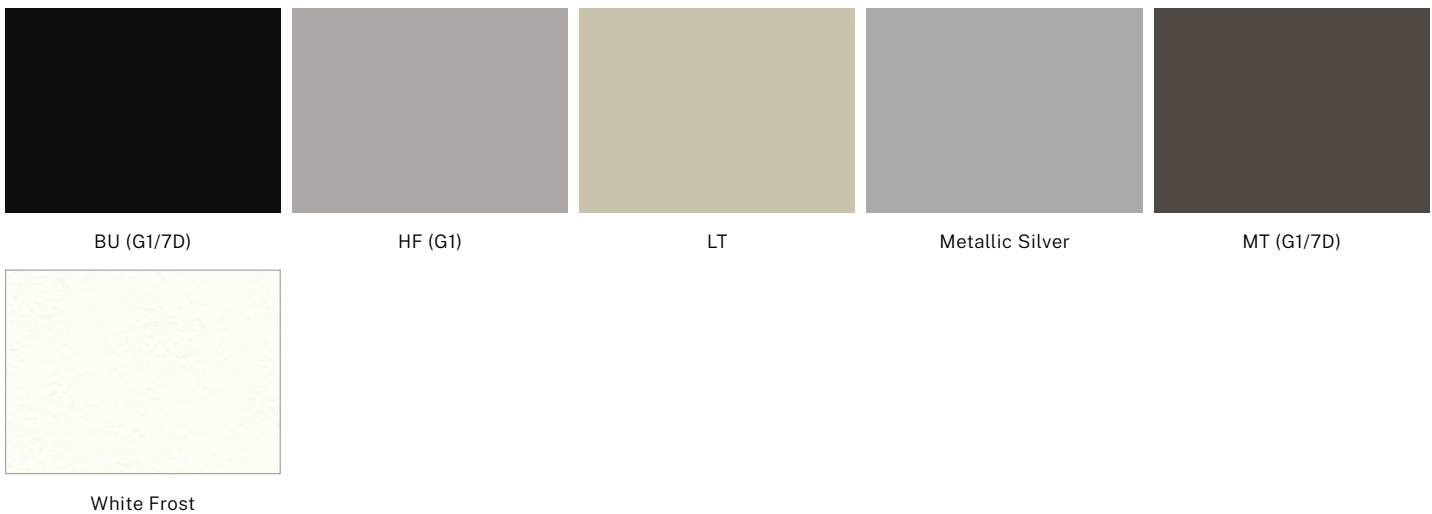
NOTE: As digitally printed images, colors may vary from physical samples.
To request a sample of a finish shown on this card, please email samples@openplan.com.



EDGE BANDING



BASE/PAINT/TRIM



All Edge, Base and Paint/Trim options are eligible for the Signature Grade 2 Program.

(G1): Eligible for Signature Grade 1 Program when combined with Signature Grade 1 Program options and finishes.
(7D): Eligible for 7 Day Program when combined with 7 Day Program options and finishes.

PANEL FABRICS SIGNATURE GRADE 1

OPS FABRICS



NOTE: As digitally printed images, colors may vary from physical samples.
 To request a sample of a finish shown on this card, please email samples@openplan.com.

Some Signature Grade 1 Fabrics are import fabrics and subject to minor imperfections.



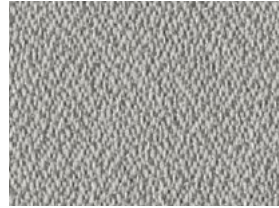
Brown's Island (7D)



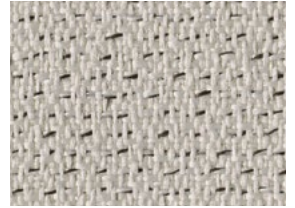
Canal Walk (7D)



Carytown



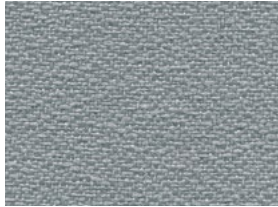
Cinder (7D)



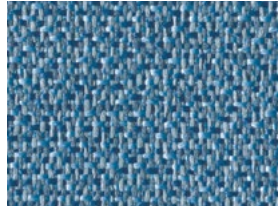
Colonial Downs (7D)



Drew Cove



Grey Sky (7D)



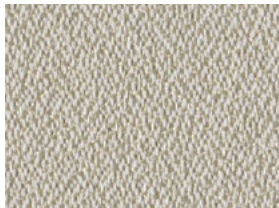
James River



Maymont



Pebble Creek (7D)



Sand



Smokey Pine



Surfside



Glide Crema



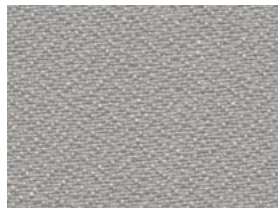
Glide Java



Glide Pewter



Glide Slate



Glide Sterling



Pasture Brook



Pasture Gull



Pasture Wing



Sleek Graphite



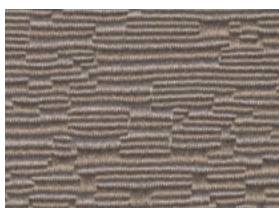
Sleek Natural



Sleek Overcast



Terrace Cloud



Terrace Earth



Terrace Wave

(7D): Eligible for 7 Day Program when combined with 7 Day Program options and finishes.

Style	Brown's Island Canal Walk Carytown	Cinder Colonial Downs Drew Cove	Sand James River Maymont	Smokey Pine Surfside	Grey Sky Pebble Creek Glide (all)	Pasture (all)	Sleek (all)	Terrace (all)
Content	100% Polyester	100% Polyester	100% Polyester	100% Polyester	100% Polyester	100% Polyester	100% Polyester	100% Polyester
Weight	6151 kg	6151 kg	Maymont: 319 ± 10g James River: 6151kg	Smokey Pine: 459 ± 10g Surfside: 153g/sq m	6151 kg	6151 kg	6151 kg	6151 kg
Width (see Note below)	66"	66"	66"	66"	66"	66"	66"	66"

Care

Cleaning Code	W-S	W-S	W-S	W-S	W-S	W-S	W-S	W-S
---------------	-----	-----	-----	-----	-----	-----	-----	-----

Cleaning Suggestions
Fabrics may be cleaned with mild, water-free solvents or water-based cleaning agents or foam.

Performance


Breaking Strength (ASTM D5034)	Brown's Island: Warp: 240 lbs. min. Fill: 165 lbs. min.	Cinder: Warp: 145 lbs. min. Fill: 180 lbs. min.	Sand: Warp: 185 lbs. min. Fill: 125 lbs. min.	Smokey Pine: Warp: 275 lbs. min. Fill: 242 lbs. min.	Warp: 220 lbs. min. Fill: 205 lbs. min.	Warp: 230 lbs. min. Fill: 210 lbs. min.	Warp: 165 lbs. min. Fill: 130 lbs. min.	Warp: 240 lbs. min. Fill: 115 lbs. min.
	Canal Walk: Warp: 150 lbs. min. Fill: 165 lbs. min.	Colonial Downs: Warp: 250 lbs. min. Fill: 230 lbs. min.	James River: Warp: 170 lbs. min. Fill: 135 lbs. min.	Surfside: Warp: 155 lbs. min. Fill: 178 lbs. min.	Warp: 171 lbs. min. Fill: 15 lbs. min.	Warp: 20 lbs. min. Fill: 36 lbs. min.	Warp: 12 lbs. min. Fill: 10 lbs. min.	Warp: 38 lbs. min. Fill: 26 lbs. min.
	Carytown: Warp: 180 lbs. min. Fill: 143 lbs. min.	Drew Cove: Warp: 240 lbs. min. Fill: 149 lbs. min.	Maymont: Warp: 360 lbs. min. Fill: 260 lbs. min.	Warp: 59 lbs. min. Fill: 55 lbs. min.	Warp: 22 lbs. min. Fill: 18 lbs. min.	Warp: 20 lbs. min. Fill: 36 lbs. min.	Warp: 10 lbs. min.	
	Brown's Island: Warp: 26 lbs. min. Fill: 20 lbs. min.	Cinder: Warp: 15 lbs. min. Fill: 18 lbs. min.	Sand: Warp: 28 lbs. min. Fill: 25 lbs. min.	Smokey Pine: Warp: 59 lbs. min. Fill: 55 lbs. min.	Warp: 171 lbs. min. Fill: 15 lbs. min.	Warp: 20 lbs. min. Fill: 36 lbs. min.	Warp: 12 lbs. min. Fill: 10 lbs. min.	Warp: 38 lbs. min. Fill: 26 lbs. min.

Tear Strength (ASTM D2261)	Canal Walk: Warp: 15 lbs. min. Fill: 20 lbs. min.	Colonial Downs: Warp: 33 lbs. min. Fill: 44 lbs. min.	James River: Warp: 15 lbs. min. Fill: 13 lbs. min.	Surfside: Warp: 22 lbs. min. Fill: 18 lbs. min.	Warp: 171 lbs. min. Fill: 15 lbs. min.	Warp: 20 lbs. min. Fill: 36 lbs. min.	Warp: 12 lbs. min. Fill: 10 lbs. min.	Warp: 38 lbs. min. Fill: 26 lbs. min.
	Carytown: Warp: 11 lbs. min. Fill: 13 lbs. min.	Drew Cove: Warp: 59 lbs. min. Fill: 55 lbs. min.	Maymont: Warp: 28 lbs. min. Fill: 22 lbs. min.	Warp: 18 lbs. min.	Warp: 171 lbs. min. Fill: 15 lbs. min.	Warp: 20 lbs. min. Fill: 36 lbs. min.	Warp: 12 lbs. min. Fill: 10 lbs. min.	Warp: 38 lbs. min. Fill: 26 lbs. min.

Flammability

Colorfastness to Light (AATCC 16 Option 3)	30 hrs.	Cinder: 40 hrs. Colonial Downs/Drew Cove: 30 hrs.	Sand : 40 hrs James River/ Maymont: 30 hrs.	Smokey Pine: 30 hrs. Surfside: 40 hrs.	40 hrs.	Grade 3	Grade 3	Grade 3
Colorfastness to Crocking (AATCC 8)	4-5 Dry 4-5 Wet	4-5 Dry 4-5 Wet	4-5 Dry 4-5 Wet	4-5 Dry 4-5 Wet	4-5 Dry 4-5 Wet	4 Dry 4 Wet	4 Dry 4 Wet	4 Dry 4 Wet

Colors may vary between dye lots. These are directional fabrics. Application testing of these products is recommended.
NOTE: Please confirm with your Customer Service Representative that fabric is available in 66" W. Some fabrics may still be 60" W, which are not recommended for 60" W panels.

 This pattern is included in the underwriters laboratory panel fabric recognition program. Additional testing of this U.L. recognized fabric is not required on approved panels from participating manufacturers.

Terratec is a registered trademark of Duvaltex and designates fabrics that are made from 100% recycled or composable material using increasingly sustainable manufacturing practices to produce a high quality product that is recyclable at the end of its useful life.

PANEL FABRICS SIGNATURE GRADE 1

GUILFORD OF MAINE & BURCH FABRICS



NOTE: As digitally printed images, colors may vary from physical samples.
 To request a sample of a finish shown on this card, please email samples@openplan.com.

CENTURY



Amber 7177



Aspen 7176



Atlantic 7180



Dew 7178



Driftwood 7181



Fossil 7179



Limestone 7183

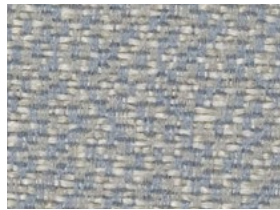


Oro 7182

MIDWAY



Almond 7238



Chambray 7244



Flint 7245



Haze 7246



Mineral 7237



Oasis 7243



Opal 7240



Rye 7241

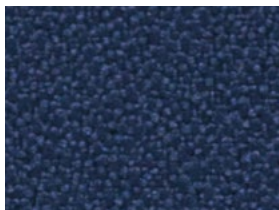


Saddle 7242

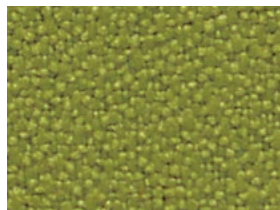


Wheat 7239

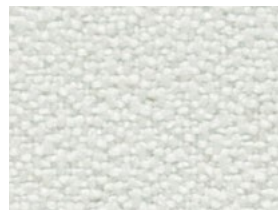
PRIME TIME Additional colors available in Grade 2



Marina 1010090



Spring 1010097



Sterling 1010106



Tangerine 1010083

PANEL FABRICS SIGNATURE GRADE 1

To request a sample of a fabric shown on this card, please email samples@openplan.com.



Style	Century	Midway	Prime Time
Content	100% Polyester	100% Polyester	100% Post Consumer Recycled Polyester
Weight	12.6 oz / lin yd	10.65 oz / lin yd	15.0 oz / lin yd
Width	66"	66"	66"
Repeat	N/A	N/A	N/A
Treatment	None	None	None
Care			
Cleaning Code	W-S	W-S	W-S
Cleaning Suggestions	Clean with water based cleaning agents, foam or pure, water free solvents. Vacuuming or light brushing is recommended to prevent dust and soil buildup.	Clean with water based cleaning agents, foam or pure, water free solvents. Vacuuming or light brushing is recommended to prevent dust and soil buildup.	Clean with water based cleaning agents, foam or pure, water free solvents. Vacuuming or light brushing is recommended to prevent dust and soil buildup.
Performance			
Breaking Strength (ASTM D5034)	Warp: 249.0 lbs. Fill: 248.0 lbs.	Warp: 212.0 lbs. Fill: 151.0 lbs.	Warp: 325.0 lbs. Fill: 275.0 lbs.
Tear Strength (ASTM D2261)	Warp: 23.3 lbs. Fill: 30.2 lbs.	Warp: 37.5 lbs. Fill: 61.3 lbs.	Warp: 48.0 lbs. Fill: 53.0 lbs.
Colorfastness to Light (AATCC 16 Option 3)	40 hrs. Class 4.5	40 hrs. Class 4	40 hrs. Class 4.5
Colorfastness to Crocking (AATCC 8)	4.5 Dry, 5.0 Wet	4.5 Dry, 4.5 Wet	4.5 Dry, 4.5 Wet
Flammability			
ASTM E-84	Class A or 1	Class A or 1	Class A or 1

Every effort has been made to ensure color accuracy of the digital images, however, please order a sample before specification. Colors may vary between dye lots. These are directional fabrics. Application testing of these products is recommended.

Proudly woven in North America supporting our local communities.



Midway is a directional fabric. Please use caution when cutting and applying.



This pattern is included in the underwriters laboratory panel fabric recognition program. Additional testing of this U.L. recognized fabric is not required on approved panels from participating manufacturers.



Terratex is a registered trademark of Duvaltex and designates fabrics that are made from 100% recycled or compostable material using increasingly sustainable manufacturing practices to produce a high quality product that is recyclable at the end of its useful life.



Guilford of Maine

Burch

PANEL FABRICS SIGNATURE GRADE 1

GUILFORD OF MAINE & BURCH FABRICS



NOTE: As digitally printed images, colors may vary from physical samples.
 To request a sample of a finish shown on this card, please email samples@openplan.com.

SPRITE 2671



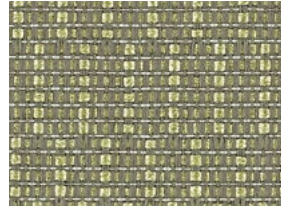
Butter 7020



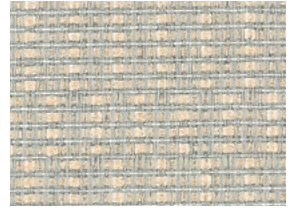
Harvest 7032



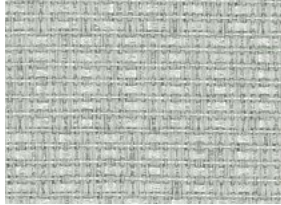
Khaki 7030



Kiwi 7031



Linen 7010



Powder 7011



Sherbert 7012



Sky 7033

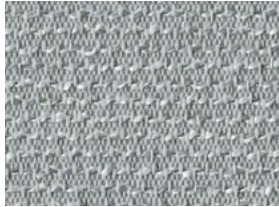


Snow 7040

STRATA 2968



Cement 060



Cloud 040



Latte 031



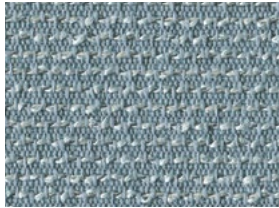
Linen 010



Sand 030



Sea 070



Sky 050

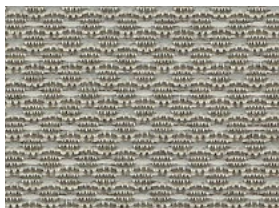


Straw 020

TRACTION



Chrome 7759



Earth 7757



Greystone 7758



Jute 7754



Platinum 7753



Wheat 7756

PANEL FABRICS SIGNATURE GRADE 1

To request a sample of a fabric shown on this card, please email samples@openplan.com.



Style	Sprite 2671	Strata 2968	Traction*
Content	5% Post-Consumer Recycled Polyester 95% Pre-Consumer Recycled Polyester	100% Pre-Consumer Recycled Polyester	100% Polyester
Weight	10.8 ± 0.5 oz / lin yd	11.8 ± 1.0 oz / lin yd	11.7 oz / lin yd
Width	66"	66"	66"
Repeat	.83" Vertical, .26" Horizontal	.1" Vertical, None Horizontal	N/A
Treatment	Polyester Binder	None	None
Care			
Cleaning Code	W-S	W-S	W-S
Cleaning Suggestions	Clean with water based cleaning agents, foam or pure, water free solvents. Vacuuming or light brushing is recommended to prevent dust and soil buildup.	Clean with water based cleaning agents, foam or pure, water free solvents. Vacuuming or light brushing is recommended to prevent dust and soil buildup.	Clean with water based cleaning agents, foam or pure, water free solvents. Vacuuming or light brushing is recommended to prevent dust and soil buildup.
Performance			
Breaking Strength (ASTM D5034)	Warp: 175.0 lbf min. Fill: 175.0 lbf min.	Warp: 200.0 lbf min. Fill: 100.0 lbf min.	Warp: 281.0 lbs. Fill: 181.0 lbs.
Tear Strength (ASTM D2261)	Warp: 35.0 lbf min. Fill: 25.0 lbf min.	Warp: 20.0 lbf min. Fill: 20.0 lbf min.	Warp: 29.7 lbs. Fill: 31.4 lbs.
Colorfastness to Light (AATCC 16 Option 3)	40 hrs. Grade 4 min.	40 hrs. Grade 4 min.	40 hrs. Class 5
Colorfastness to Crocking (AATCC 8)	4.0 min. Dry 3.0 min. Wet	4.0 min. Dry 3.0 min. Wet	5.0 Dry, 5.0 Wet
Flammability			
ASTM E-84	Class A or 1	Class A or 1	Class A or 1

Every effort has been made to ensure color accuracy of the digital images, however, please order a sample before specification. Colors may vary between dye lots. These are directional fabrics. Application testing of these products is recommended.

Proudly woven in North America supporting our local communities.

* Traction is lightly backed



Traction is a directional fabric. Please use caution when cutting and applying.



This pattern is included in the underwriters laboratory panel fabric recognition program. Additional testing of this U.L. recognized fabric is not required on approved panels from participating manufacturers.



Terratex is a registered trademark of Duvaltex and designates fabrics that are made from 100% recycled or compostable material using increasingly sustainable manufacturing practices to produce a high quality product that is recyclable at the end of its useful life.

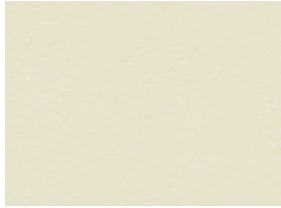


FINISHES SIGNATURE GRADE 1

NOTE: As digitally printed images, colors may vary from physical samples.
To request a sample of a finish shown on this card, please email samples@openplan.com.



WORK SURFACES



Antique White (7D)



Fog



Folkstone Grey (7D)



Hardrock Maple (7D) (+)

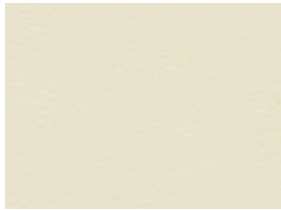


McKinley White



White Nebula (7D)

EDGE BANDING



Antique White (7D)



BU (7D)



Folkstone Grey (7D)



Hardrock Maple (7D)



HF



MT (7D)

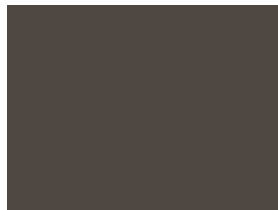
BASE & PAINT/TRIM



BU (7D)



HF



MT (7D)

(7D): Eligible for 7 Day Program when combined with 7 Day Program options and finishes.
(+): Work surface is grained.



OPS laminates and panel cores comply with the formaldehyde emission standards specified in US EPA TSCA Title VI (40 C.F.R. Par 770.10) and CARB ATCM 93120.2(A) Phase 2.

LAMINATES ADDITIONAL OPTIONS

NOTE: As digitally printed images, colors may vary from physical samples.

To request a sample of a finish shown on this card, please email samples@openplan.com.

Laminate is not available in 12" or 60" wide tiles.



SIXTY-FIVE SYSTEM - LAMINATE TILES



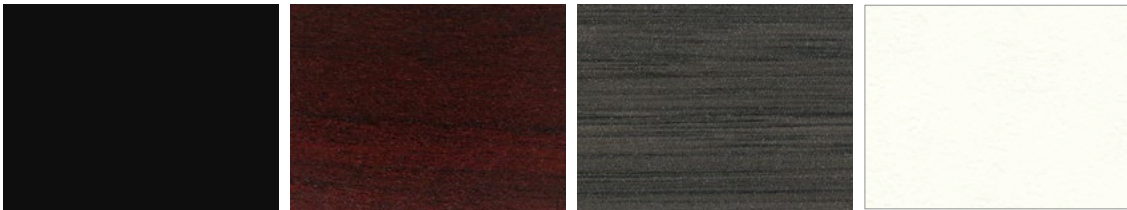
Campania Elme (+)

Tuscani Elme (+)

Umbria Elme (+)

Standard laminate options shown (Campania Elme, Tuscani Elme, UMBER Elme) are available at no additional charge. No custom laminate tile options available. Marker Board finish is applied via painted tile.

OPS2 PANEL SYSTEM (RAZOR & STANDARD BASE) - LAMINATE PANELS



BU

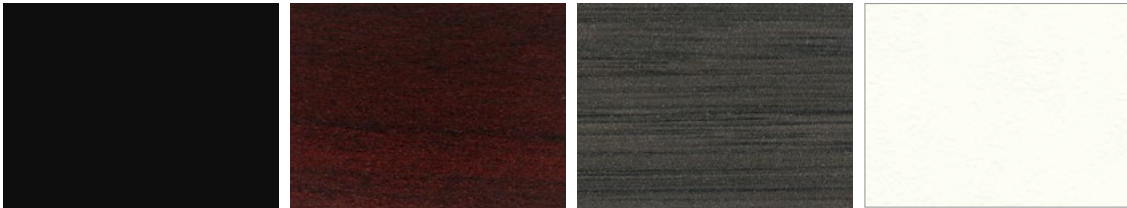
Empire Mahogany (+)

Shadow Ridge (+)

White Frost

Standard laminate options shown (BU, Empire Mahogany, Shadow Ridge, White Frost) are available for 2% change in discount. All other laminate/ marker board options available for 4% change in discount. Custom laminate requests would need to be approved and priced by purchasing.

OPS2 TILE SYSTEM (RAZOR & STANDARD BASE) - LAMINATE TILES



BU

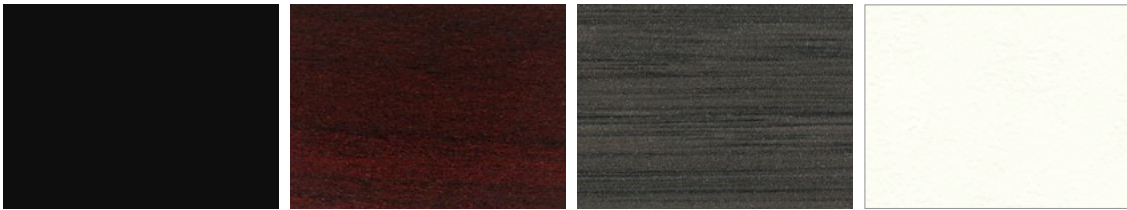
Empire Mahogany (+)

Shadow Ridge (+)

White Frost

Standard laminate options shown (BU, Empire Mahogany, Shadow Ridge, White Frost) are available at no additional charge. All other laminate/ marker board options available for \$10.00 per tile. Custom laminate requests would need to be approved and priced by purchasing.

LAMINATE MDF SCREENS & DESK SCREEN DIVIDERS



BU

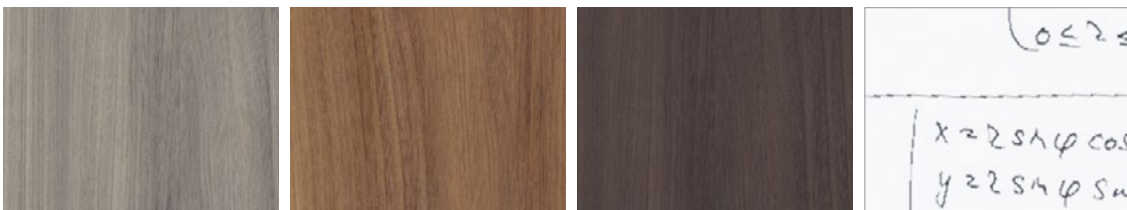
Empire Mahogany (+)

Shadow Ridge (+)

White Frost

Standard laminate options shown (BU, Empire Mahogany, Shadow Ridge, White Frost) are available for 2% change in discount. All other laminate/ marker board options available for 4% change in discount. Custom laminate requests would need to be approved and priced by purchasing.

FREESTANDING SCREENS - LAMINATE PANELS



Campania Elme (+)

Tuscani Elme (+)

Umbria Elme (+)

Magnetic Marker Board

Standard laminate options shown (Campania Elme, Tuscani Elme, UMBER Elme, Magnetic Marker Board) are available at no additional charge. No custom laminate options available.

(+): Laminate is grained.



OPS laminates and panel cores comply with the formaldehyde emission standards specified in US EPA TSCA Title VI (40 C.F.R. Par 770.10) and CARB ATCM 93120.2(A) Phase 2.