

# PANEL FABRICS SIGNATURE GRADE 1

## OPS FABRICS



NOTE: As digitally printed images, colors may vary from physical samples.  
 To request a sample of a finish shown on this card, please email [samples@openplan.com](mailto:samples@openplan.com).

Some Signature Grade 1 Fabrics are import fabrics and subject to minor imperfections.



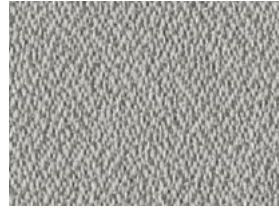
Brown's Island (7D)



Canal Walk (7D)



Carytown



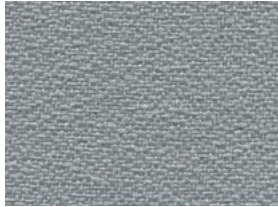
Cinder (7D)



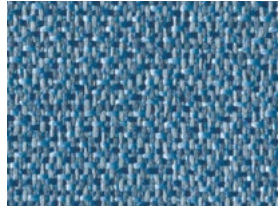
Colonial Downs (7D)



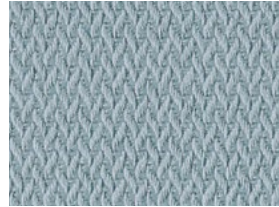
Drew Cove



Grey Sky (7D)



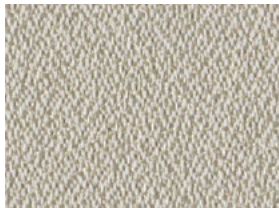
James River



Maymont



Pebble Creek (7D)



Sand



Smokey Pine



Surfside



Glide Crema



Glide Java



Glide Pewter



Glide Slate



Glide Sterling



Pasture Brook



Pasture Gull



Pasture Wing



Sleek Graphite



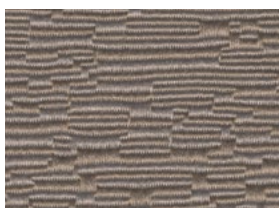
Sleek Natural



Sleek Overcast



Terrace Cloud



Terrace Earth



Terrace Wave

(7D): Eligible for 7 Day Program when combined with 7 Day Program options and finishes.

Style	Brown's Island Canal Walk Carytown	Cinder Colonial Downs Drew Cove	Sand James River Maymont	Smokey Pine Surfside	Grey Sky Pebble Creek Glide (all)	Pasture (all)	Sleek (all)	Terrace (all)
Content	100% Polyester	100% Polyester	100% Polyester	100% Polyester	100% Polyester	100% Polyester	100% Polyester	100% Polyester
Weight	6151 kg	6151 kg	Maymont: 319 ± 10g James River: 6151kg	Smokey Pine: 459 ± 10g Surfside: 153g/sq m	6151 kg	6151 kg	6151 kg	6151 kg
Width (see Note below)	66"	66"	66"	66"	66"	66"	66"	66"

**Care**

Cleaning Code	W-S	W-S	W-S	W-S	W-S	W-S	W-S	W-S
---------------	-----	-----	-----	-----	-----	-----	-----	-----

Cleaning Suggestions  
Fabrics may be cleaned with mild, water-free solvents or water-based cleaning agents or foam.

**Performance**

Breaking Strength (ASTM D5034)	Brown's Island: Warp: 240 lbs. min. Fill: 165 lbs. min.	Cinder: Warp: 145 lbs. min. Fill: 180 lbs. min.	Sand: Warp: 185 lbs. min. Fill: 125 lbs. min.	Smokey Pine: Warp: 275 lbs. min. Fill: 242 lbs. min.	Warp: 220 lbs. min. Fill: 205 lbs. min.	Warp: 230 lbs. min. Fill: 210 lbs. min.	Warp: 165 lbs. min. Fill: 130 lbs. min.	Warp: 240 lbs. min. Fill: 115 lbs. min.
	Canal Walk: Warp: 150 lbs. min. Fill: 165 lbs. min.	Colonial Downs: Warp: 250 lbs. min. Fill: 230 lbs. min.	James River: Warp: 170 lbs. min. Fill: 135 lbs. min.	Surfside: Warp: 155 lbs. min. Fill: 178 lbs. min.	Warp: 171 lbs. min. Fill: 15 lbs. min.	Warp: 20 lbs. min. Fill: 36 lbs. min.	Warp: 12 lbs. min. Fill: 10 lbs. min.	Warp: 38 lbs. min. Fill: 26 lbs. min.
	Carytown: Warp: 180 lbs. min. Fill: 143 lbs. min.	Drew Cove: Warp: 240 lbs. min. Fill: 149 lbs. min.	Maymont: Warp: 360 lbs. min. Fill: 260 lbs. min.	Warp: 59 lbs. min. Fill: 55 lbs. min.	Warp: 22 lbs. min. Fill: 18 lbs. min.	Warp: 20 lbs. min. Fill: 36 lbs. min.	Warp: 12 lbs. min. Fill: 10 lbs. min.	Warp: 38 lbs. min. Fill: 26 lbs. min.
	Brown's Island: Warp: 26 lbs. min. Fill: 20 lbs. min.	Cinder: Warp: 15 lbs. min. Fill: 18 lbs. min.	Sand: Warp: 28 lbs. min. Fill: 25 lbs. min.	Smokey Pine: Warp: 59 lbs. min. Fill: 55 lbs. min.	Warp: 171 lbs. min. Fill: 15 lbs. min.	Warp: 20 lbs. min. Fill: 36 lbs. min.	Warp: 12 lbs. min. Fill: 10 lbs. min.	Warp: 38 lbs. min. Fill: 26 lbs. min.
Tear Strength (ASTM D2261)	Canal Walk: Warp: 15 lbs. min. Fill: 20 lbs. min.	Colonial Downs: Warp: 33 lbs. min. Fill: 44 lbs. min.	James River: Warp: 15 lbs. min. Fill: 13 lbs. min.	Surfside: Warp: 22 lbs. min. Fill: 18 lbs. min.	Warp: 171 lbs. min. Fill: 15 lbs. min.	Warp: 20 lbs. min. Fill: 36 lbs. min.	Warp: 12 lbs. min. Fill: 10 lbs. min.	Warp: 38 lbs. min. Fill: 26 lbs. min.
	Carytown: Warp: 11 lbs. min. Fill: 13 lbs. min.	Drew Cove: Warp: 59 lbs. min. Fill: 55 lbs. min.	Maymont: Warp: 28 lbs. min. Fill: 22 lbs. min.	Warp: 18 lbs. min. Fill: 18 lbs. min.	Warp: 171 lbs. min. Fill: 15 lbs. min.	Warp: 20 lbs. min. Fill: 36 lbs. min.	Warp: 12 lbs. min. Fill: 10 lbs. min.	Warp: 38 lbs. min. Fill: 26 lbs. min.
Colorfastness to Light (AATCC 16 Option 3)	30 hrs.	Cinder: 40 hrs. Colonial Downs/Drew Cove: 30 hrs.	Sand : 40 hrs James River/ Maymont: 30 hrs.	Smokey Pine: 30 hrs. Surfside: 40 hrs.	40 hrs.	Grade 3	Grade 3	Grade 3
	4-5 Dry 4-5 Wet	4-5 Dry 4-5 Wet	4-5 Dry 4-5 Wet	4-5 Dry 4-5 Wet	4-5 Dry 4-5 Wet	4 Dry 4 Wet	4 Dry 4 Wet	4 Dry 4 Wet

**Flammability**

ASTM E-84	Not Tested	Not Tested	Not Tested	Not Tested	Not Tested	Not Tested	Not Tested	Not Tested
Cal. Tech Bulletin 117 Sec. E Part 1 (CS191-53)	Pass	Pass	Pass	Pass	Pass	Pass	Pass	Pass

Colors may vary between dye lots. These are directional fabrics. Application testing of these products is recommended.  
NOTE: Please confirm with your Customer Service Representative that fabric is available in 66" W. Some fabrics may still be 60" W, which are not recommended for 60" W panels.



® This pattern is included in the underwriters laboratory panel fabric recognition program. Additional testing of this U.L. recognized fabric is not required on approved panels from participating manufacturers.  
Terratex is a registered trademark of Duvaltex and designates fabrics that are made from 100% recycled or composable material using increasingly sustainable manufacturing practices to produce a high quality product that is recyclable at the end of its useful life.

# PANEL FABRICS SIGNATURE GRADE 1

## GUILFORD OF MAINE & BURCH FABRICS



NOTE: As digitally printed images, colors may vary from physical samples.  
 To request a sample of a finish shown on this card, please email [samples@openplan.com](mailto:samples@openplan.com).

### CENTURY



Amber 7177



Aspen 7176



Atlantic 7180



Dew 7178



Driftwood 7181



Fossil 7179



Limestone 7183



Oro 7182

### MIDWAY



Almond 7238



Chambray 7244



Flint 7245



Haze 7246



Mineral 7237



Oasis 7243



Opal 7240



Rye 7241

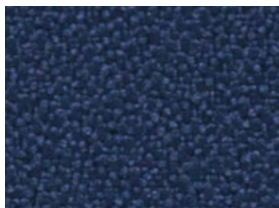


Saddle 7242



Wheat 7239

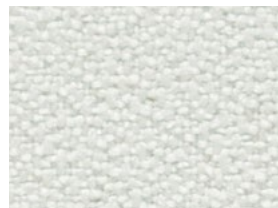
### PRIME TIME Additional colors available in Grade 2



Marina 1010090



Spring 1010097



Sterling 1010106



Tangerine 1010083

# PANEL FABRICS SIGNATURE GRADE 1

To request a sample of a fabric shown on this card, please email [samples@openplan.com](mailto:samples@openplan.com).



Style	Century	Midway	Prime Time
Content	100% Polyester	100% Polyester	100% Post Consumer Recycled Polyester
Weight	12.6 oz / lin yd	10.65 oz / lin yd	15.0 oz / lin yd
Width	66"	66"	66"
Repeat	N/A	N/A	N/A
Treatment	None	None	None
Care			
Cleaning Code	W-S	W-S	W-S
Cleaning Suggestions	Clean with water based cleaning agents, foam or pure, water free solvents. Vacuuming or light brushing is recommended to prevent dust and soil buildup.	Clean with water based cleaning agents, foam or pure, water free solvents. Vacuuming or light brushing is recommended to prevent dust and soil buildup.	Clean with water based cleaning agents, foam or pure, water free solvents. Vacuuming or light brushing is recommended to prevent dust and soil buildup.
Performance			
Breaking Strength (ASTM D5034)	Warp: 249.0 lbs. Fill: 248.0 lbs.	Warp: 212.0 lbs. Fill: 151.0 lbs.	Warp: 325.0 lbs. Fill: 275.0 lbs.
Tear Strength (ASTM D2261)	Warp: 23.3 lbs. Fill: 30.2 lbs.	Warp: 37.5 lbs. Fill: 61.3 lbs.	Warp: 48.0 lbs. Fill: 53.0 lbs.
Colorfastness to Light (AATCC 16 Option 3)	40 hrs. Class 4.5	40 hrs. Class 4	40 hrs. Class 4.5
Colorfastness to Crocking (AATCC 8)	4.5 Dry, 5.0 Wet	4.5 Dry, 4.5 Wet	4.5 Dry, 4.5 Wet
Flammability			
ASTM E-84	Class A or 1	Class A or 1	Class A or 1

Every effort has been made to ensure color accuracy of the digital images, however, please order a sample before specification. Colors may vary between dye lots. These are directional fabrics. Application testing of these products is recommended.

Proudly woven in North America supporting our local communities.



Midway is a directional fabric. Please use caution when cutting and applying.



This pattern is included in the underwriters laboratory panel fabric recognition program. Additional testing of this U.L. recognized fabric is not required on approved panels from participating manufacturers.



Terratex is a registered trademark of Duvaltex and designates fabrics that are made from 100% recycled or compostable material using increasingly sustainable manufacturing practices to produce a high quality product that is recyclable at the end of its useful life.



**Guilford of Maine**

**Burch**

# PANEL FABRICS SIGNATURE GRADE 1

## GUILFORD OF MAINE & BURCH FABRICS



NOTE: As digitally printed images, colors may vary from physical samples.  
To request a sample of a finish shown on this card, please email [samples@openplan.com](mailto:samples@openplan.com).

### SPRITE 2671



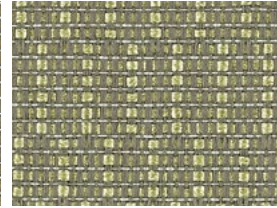
Butter 7020



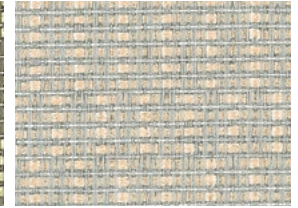
Harvest 7032



Khaki 7030



Kiwi 7031



Linen 7010



Powder 7011



Sherbert 7012

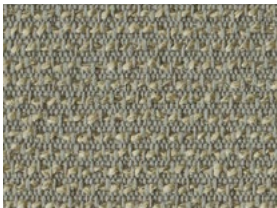


Sky 7033



Snow 7040

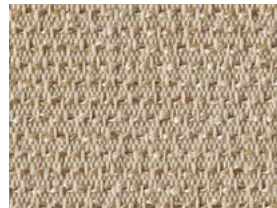
### STRATA 2968



Cement 060



Cloud 040



Latte 031



Linen 010



Sand 030



Sea 070



Sky 050

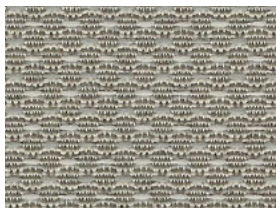


Straw 020

### TRACTION



Chrome 7759



Earth 7757



Greystone 7758



Jute 7754



Platinum 7753



Wheat 7756

# PANEL FABRICS SIGNATURE GRADE 1

To request a sample of a fabric shown on this card, please email [samples@openplan.com](mailto:samples@openplan.com).



Style	Sprite 2671	Strata 2968	Traction*
Content	5% Post-Consumer Recycled Polyester 95% Pre-Consumer Recycled Polyester	100% Pre-Consumer Recycled Polyester	100% Polyester
Weight	10.8 ± 0.5 oz / lin yd	11.8 ± 1.0 oz / lin yd	11.7 oz / lin yd
Width	66"	66"	66"
Repeat	.83" Vertical, .26" Horizontal	.1" Vertical, None Horizontal	N/A
Treatment	Polyester Binder	None	None
Care			
Cleaning Code	W-S	W-S	W-S
Cleaning Suggestions	Clean with water based cleaning agents, foam or pure, water free solvents. Vacuuming or light brushing is recommended to prevent dust and soil buildup.	Clean with water based cleaning agents, foam or pure, water free solvents. Vacuuming or light brushing is recommended to prevent dust and soil buildup.	Clean with water based cleaning agents, foam or pure, water free solvents. Vacuuming or light brushing is recommended to prevent dust and soil buildup.
Performance			
Breaking Strength (ASTM D5034)	Warp: 175.0 lbf min. Fill: 175.0 lbf min.	Warp: 200.0 lbf min. Fill: 100.0 lbf min.	Warp: 281.0 lbs. Fill: 181.0 lbs.
Tear Strength (ASTM D2261)	Warp: 35.0 lbf min. Fill: 25.0 lbf min.	Warp: 20.0 lbf min. Fill: 20.0 lbf min.	Warp: 29.7 lbs. Fill: 31.4 lbs.
Colorfastness to Light (AATCC 16 Option 3)	40 hrs. Grade 4 min.	40 hrs. Grade 4 min.	40 hrs. Class 5
Colorfastness to Crocking (AATCC 8)	4.0 min. Dry 3.0 min. Wet	4.0 min. Dry 3.0 min. Wet	5.0 Dry, 5.0 Wet
Flammability			
ASTM E-84	Class A or 1	Class A or 1	Class A or 1

Every effort has been made to ensure color accuracy of the digital images, however, please order a sample before specification. Colors may vary between dye lots. These are directional fabrics. Application testing of these products is recommended.

Proudly woven in North America supporting our local communities.

\* Traction is lightly backed



Traction is a directional fabric. Please use caution when cutting and applying.



This pattern is included in the underwriters laboratory panel fabric recognition program. Additional testing of this U.L. recognized fabric is not required on approved panels from participating manufacturers.



Terratex is a registered trademark of Duvaltex and designates fabrics that are made from 100% recycled or compostable material using increasingly sustainable manufacturing practices to produce a high quality product that is recyclable at the end of its useful life.

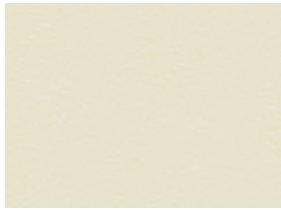


# FINISHES SIGNATURE GRADE 1

NOTE: As digitally printed images, colors may vary from physical samples.  
To request a sample of a finish shown on this card, please email [samples@openplan.com](mailto:samples@openplan.com).



## WORK SURFACES



Antique White (7D)



Fog



Folkstone Grey (7D)



Hardrock Maple (7D) (+)

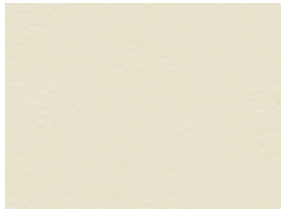


McKinley White



White Nebula (7D)

## EDGE BANDING



Antique White (7D)



BU (7D)



Folkstone Grey (7D)



Hardrock Maple (7D)



HF



MT (7D)

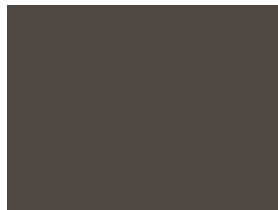
## BASE & PAINT/TRIM



BU (7D)



HF



MT (7D)

(7D): Eligible for 7 Day Program when combined with 7 Day Program options and finishes.  
(+): Work surface is grained.



OPS laminates and panel cores comply with the formaldehyde emission standards specified in US EPA TSCA Title VI (40 C.F.R. Par 770.10) and CARB ATCM 93120.2(A) Phase 2.