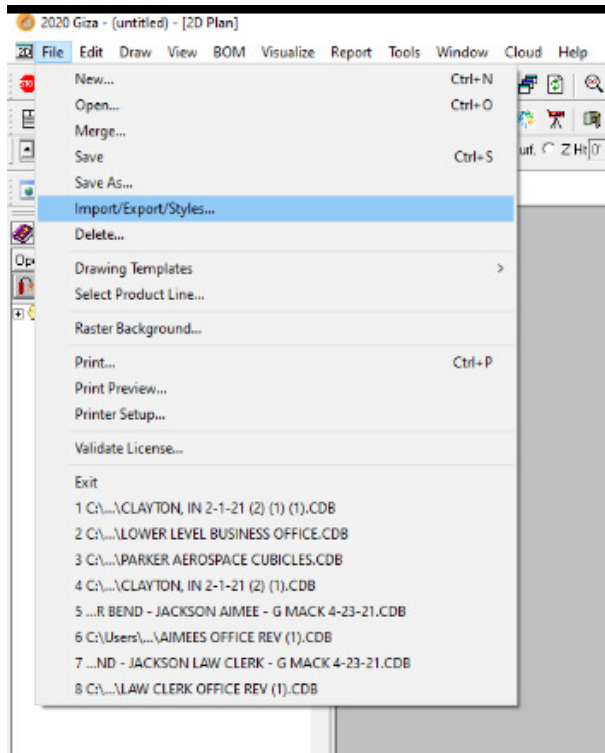
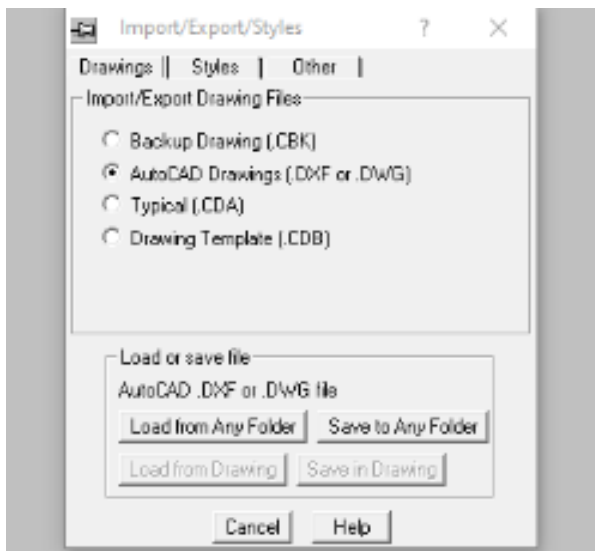


HOW TO IMPORT A DWG TO GIZA

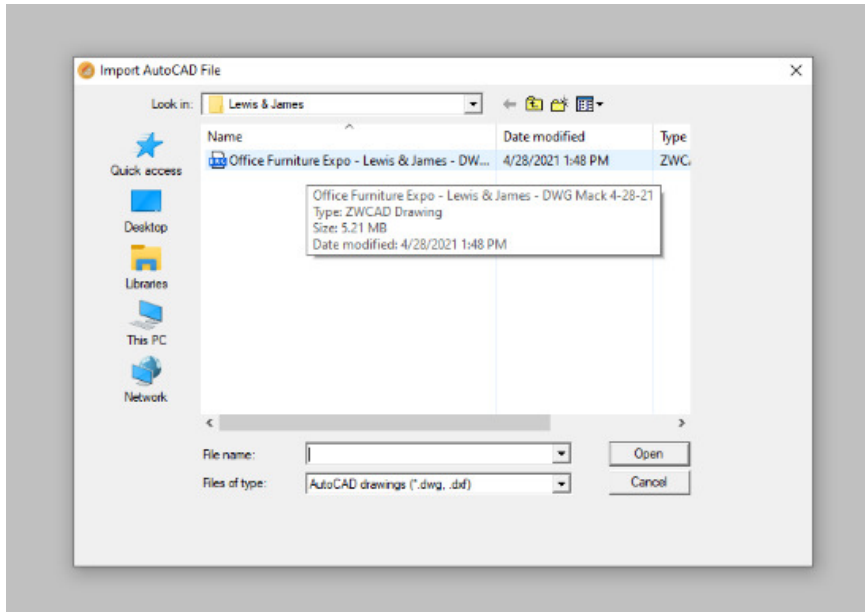
- Save the .dwg file to your computer
- Open a new Giza file
- Under the “File” menu select Import/Export/Styles or select the ribbon marked “I/E”



- A dialog box will appear, select “AutoCAD Drawings” and “Load from Any Folder”



- Select the saved file and hit “Open”



- A dialog box will appear, select “Load”. The DWG file will populate in Giza

