

# 10X12 85H

## MODULAR WALL TYPICAL

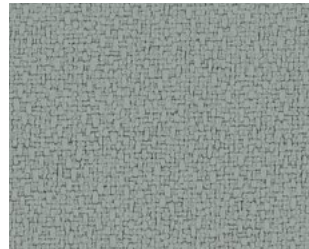


**3D RENDERING**

### STATION SPECIFICATIONS

- Modular Wall office
- 10'x12'
- 85" panel height
- 85H standard door
- Pencil drawer
- LED task lighting
- BBF-FP storage pedestal
- 3-drawer storage lateral file
- Overhead flipper door storage unit

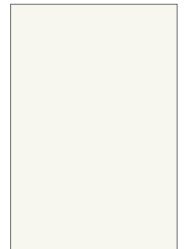
### FINISHES



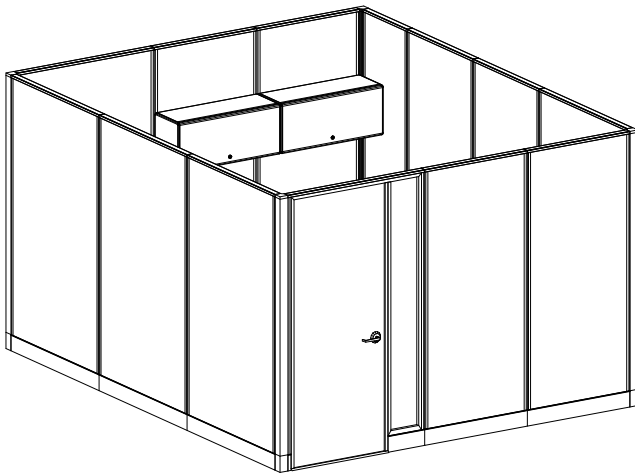
**FABRIC**  
Anchorage Slate



**SURFACE & EDGE**  
Hard Rock Maple



**PAINT**  
WF



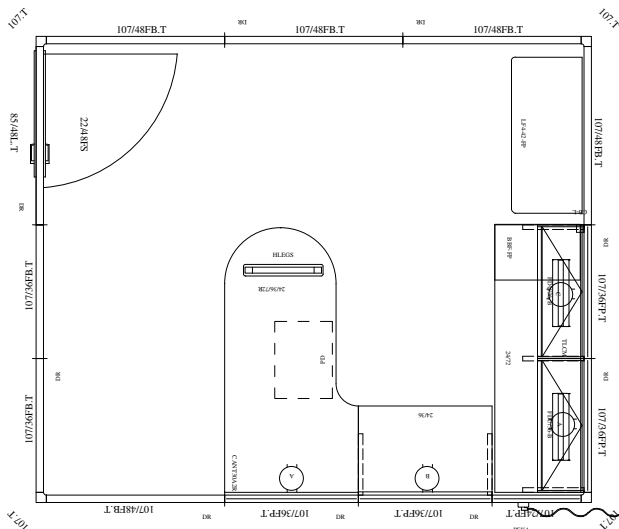
**3D PLAN LAYOUT**

### PRICING

See next page for full BOM.

**\$26,475.00 LIST TOTAL**

Typical pricing is for reference only.  
Pricing must be confirmed via official  
Price Book or Customer Service.



**2D PLAN LAYOUT**

# 10X12 85H

## MODULAR WALL TYPICAL



### PRICING

Part Number	Part Description	Qty	List	Ext List
F8524PT	85 X 24 FABRIC PANEL - POWERED THIN BASE	1	\$1065.00	\$1065.00
F8536PT	85 X 36 FABRIC PANEL - POWERED THIN BASE	4	\$1279.00	\$5116.00
F8548.T	85 X 48 FABRIC PANEL - THIN BASE	5	\$1075.00	\$5375.00
F8536.T	85 X 36 FABRIC PANEL - THIN BASE	2	\$955.00	\$1910.00
PEK4 (L OR R)	4 CIR. BASE POWER ENTRY KIT	1	\$545.00	\$545.00
REC/A.T	A Circuit Duplex Receptacle - Thin Base	2	\$47.00	\$94.00
REC/B.T	B Circuit Duplex Receptacle - Thin Base	1	\$47.00	\$47.00
REC/C.T	C Circuit Duplex Receptacle - Thin Base	1	\$47.00	\$47.00
WS2472	24 X 72 WORK SURFACE	1	\$629.00	\$629.00
WS2436	24 X 36 WORK SURFACE	1	\$379.00	\$379.00
ECCPEN243672R	24 X 36 X 72 -Rt. Ext. Curved (No Leg)	1	\$939.00	\$939.00
HLEGS	Square H-Leg for 24"D Surface	1	\$359.00	\$359.00
CRNRBR- LEFT	CORNER BRACKET (SPEC L OR R)	1	\$12.00	\$12.00
CANT30A2R	24" Cant Paint Up-Charge, Right (for 30" Surfaces)	1	\$14.00	\$14.00
FDU3612B	36 X 12 FLIPPER DOOR UNIT- B STYLE	2	\$579.00	\$1158.00
BBF-FP	BOX/BOX/FILE PEDESTAL FULL PULL 23"D W/O TOP	1	\$829.00	\$829.00
LF3-42-FP	42"W Lateral File, Full Pull, 3 Drawer	1	\$2595.00	\$2595.00
TLN-LED-S-1	LED Task Light w/ Motion Sensor and Power Supply	2	\$425.00	\$850.00
TLCM	Task Light Cord Manager (BU Only) 4'	1	\$22.00	\$22.00
PDN	PENCIL DRAWER	1	\$115.00	\$115.00
DOORPNL85LT	85" DOOR PANEL 48" WIDE W/ LITE A02 SERIES (L SWING) THIN BASE	1	\$3205.00	\$3205.00
2WY85A2.T	85" 2 WAY CONNECTOR - THIN BASE	4	\$209.00	\$836.00
PTP80	80" PANEL TO PANEL CONNECTOR	9	\$35.00	\$315.00
TLN-LED-24-S	CONN. CORD ADJOINING 36" & 42" SHELVES	1	\$19.00	\$19.00

**\$26,475.<sup>00</sup> LIST TOTAL**

Typical pricing is for reference only.  
Pricing must be confirmed via official  
Price Book or Customer Service.