

30X60 53H 6-PACK

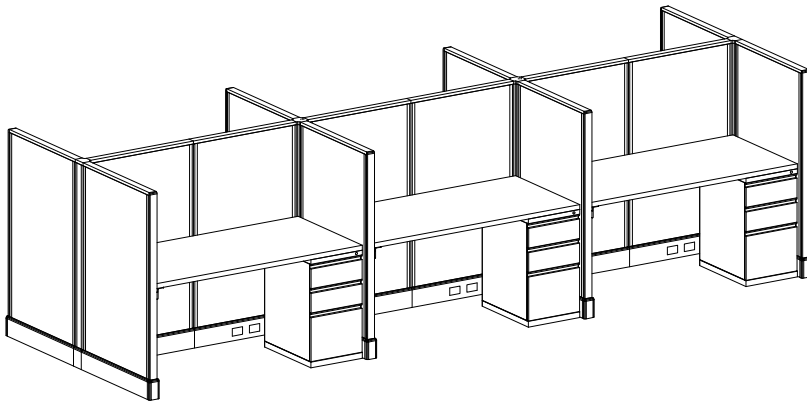
OPS2 PANEL SYSTEM TYPICAL



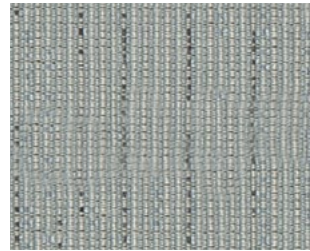
STATION SPECIFICATIONS

- OPS2 Panel System
- Monolithic panels
- 30" x 60" - 6-Pack
- 53" panel height
- Base feed power
- 4 power REC/station
- Power down the spine
- BBF-FP storage pedestal

3D RENDERING



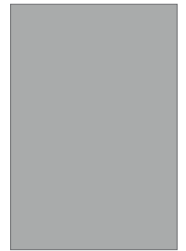
FINISHES



FABRIC
Axis Chambray



SURFACE & EDGE
Buka Bark



PAINT
MS

PRICING

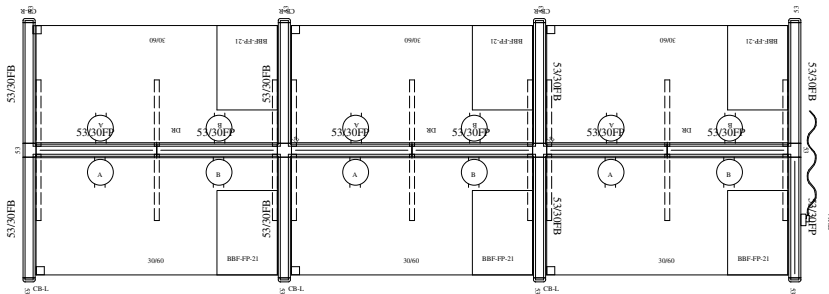
See next page for full BOM.

\$22,526.⁰⁰ LIST TOTAL

\$3,754.³³ PRICE PER STATION

Typical pricing is for reference only.
Pricing must be confirmed via official
Price Book or Customer Service.

3D PLAN LAYOUT



2D PLAN LAYOUT

30X60 53H 6-PACK

OPS2 PANEL SYSTEM TYPICAL



PRICING

Part Number	Part Description	Qty	List	Ext List
3WY53A2	53" - 3 WAY CONNECTOR	2	\$289.00	\$578.00
4WY53A2	53" - 4 WAY CONNECTOR	2	\$359.00	\$718.00
BBF-FP-21	BOX/BOX/FILE PEDESTAL FULL PULL 21"D W/OUT TOP	6	\$755.00	\$4530.00
CRNRBR- LEFT	CORNER BRACKET (SPEC L OR R)	3	\$12.00	\$36.00
CRNRBR- RIGHT	CORNER BRACKET (SPEC L OR R)	3	\$12.00	\$36.00
EC53A2	53" END CAP	8	\$75.00	\$600.00
F5330	53 X 30 FABRIC PANEL - W/BASE	7	\$619.00	\$4333.00
F5330P	53 X 30 FABRIC PANEL - POWERED	7	\$929.00	\$6503.00
PEK4 (L OR R)	4 CIR. BASE POWER ENTRY KIT	1	\$545.00	\$545.00
PTP48	48" PANEL TO PANEL CONNECTOR	3	\$31.00	\$93.00
REC/A	A CIRCUIT DUPLEX RECEPTACLES	6	\$47.00	\$282.00
REC/B	B CIRCUIT DUPLEX RECEPTACLES	6	\$47.00	\$282.00
WS3060	30 X 60 WORK SURFACE	6	\$665.00	\$3990.00

\$22,526.⁰⁰ LIST TOTAL

\$3,754.³³ PRICE PER STATION

Typical pricing is for reference only.
Pricing must be confirmed via official
Price Book or Customer Service.