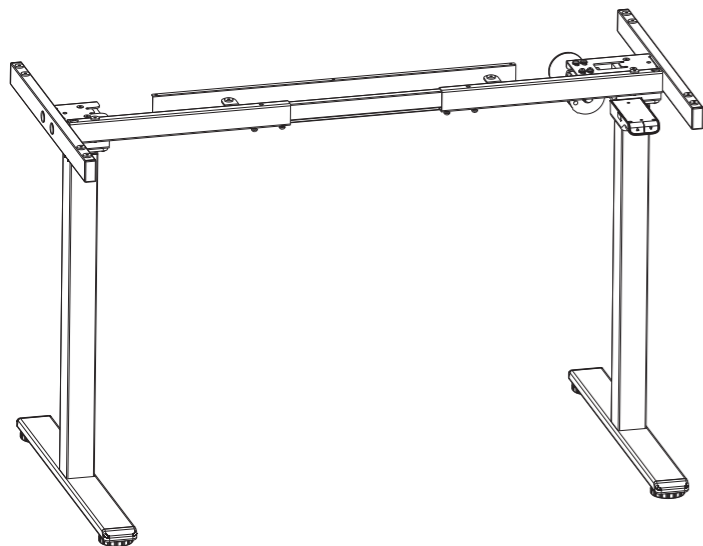


SKU: E-TABLE-2S-HOME-OFFICE
Installation guide

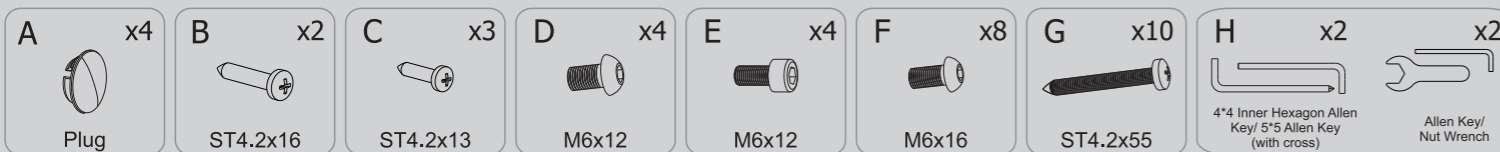


Technical data

Column Stage	2
Max. Weight Capacity	154lbs
Height Range	28.1"-47.8"
Width Range	38.4"-53.1"
Speed	1.0"/s
Desktop Dimension	(39.4"-63.0")*(19.7"-29.5")
Duty Cycle	10%, Max. 2 min on/ Min. 18 min off

Accessory list

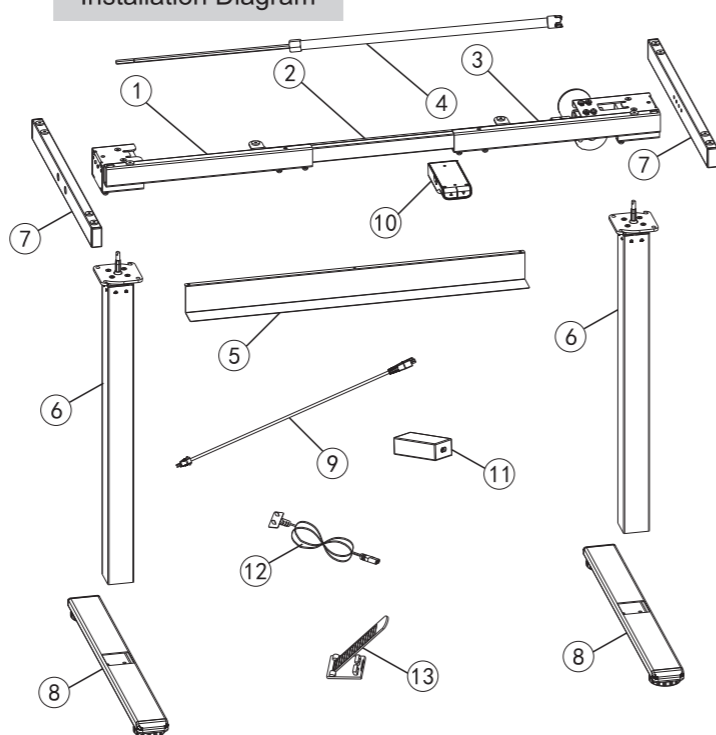
Attention: The drawings below are for guidance only and they may differ from the product and fittings received. Please contact the customer service department if there are any missing tools or installation problems.



Component List

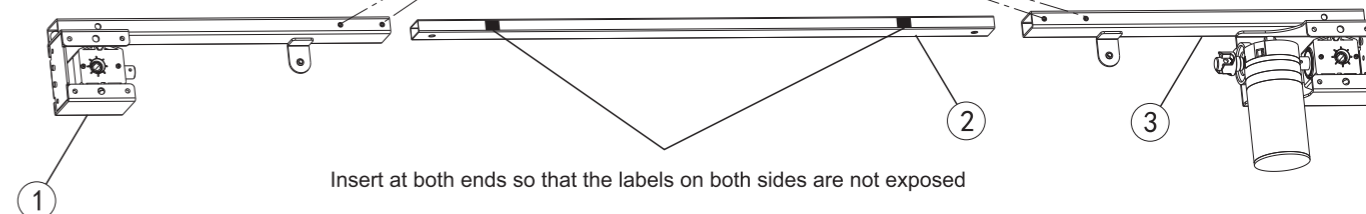
No.	Part	Qty	No.	Part	Qty
①	Left Beam	1	②	Crossbeam Connecting Pipe	1
③	Right Beam	1	④	Transmission Rod	1
⑤	Decorative Plate	1	⑥	Lifting Column	2
⑦	Side Tube	2	⑧	Foot	2
⑨	Switch Cord	1	⑩	Handset	1
⑪	Power Adapter	1	⑫	Power Plug	1
⑬	Cable Tie	4			

Installation Diagram

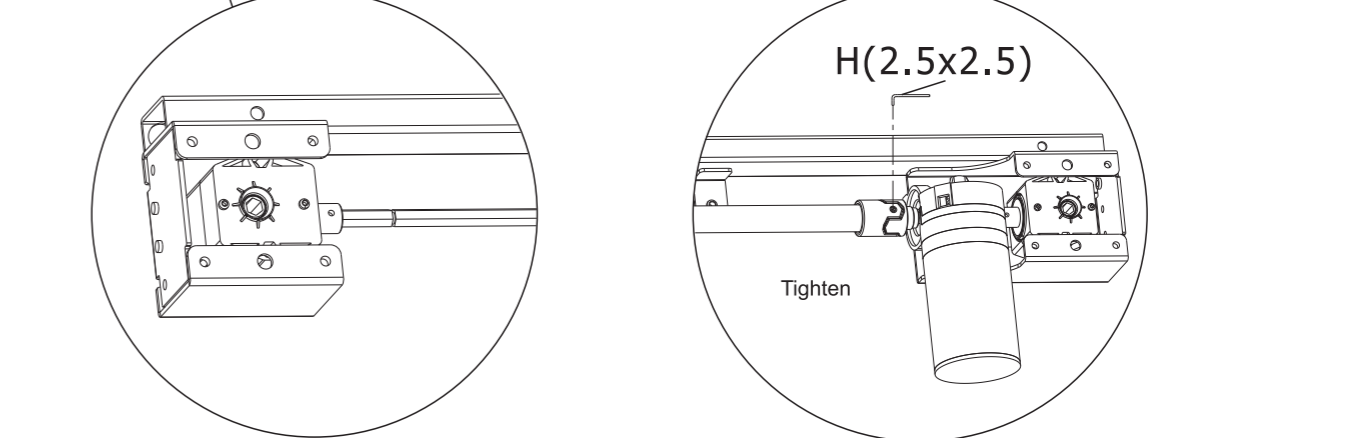
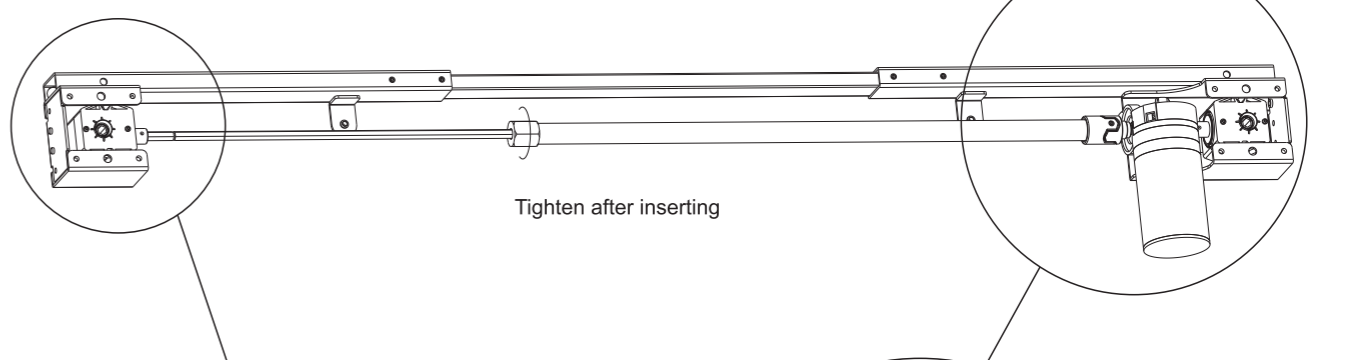
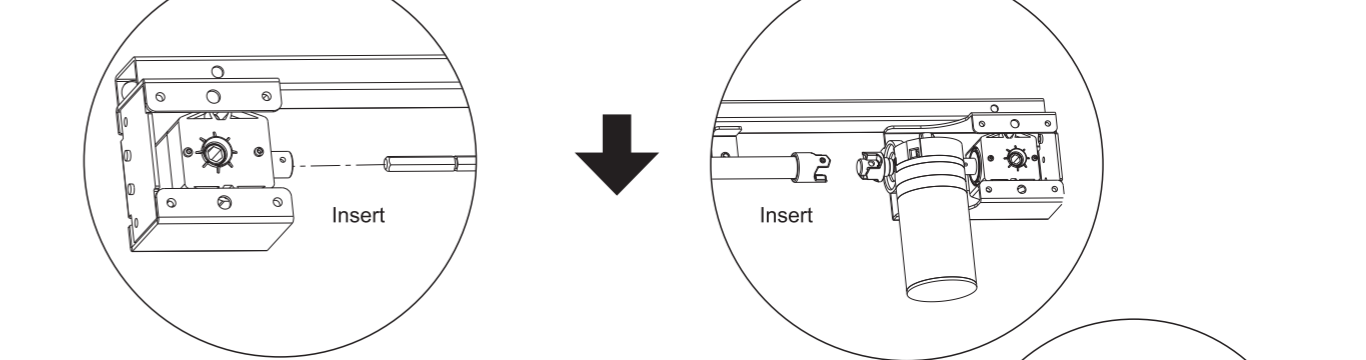
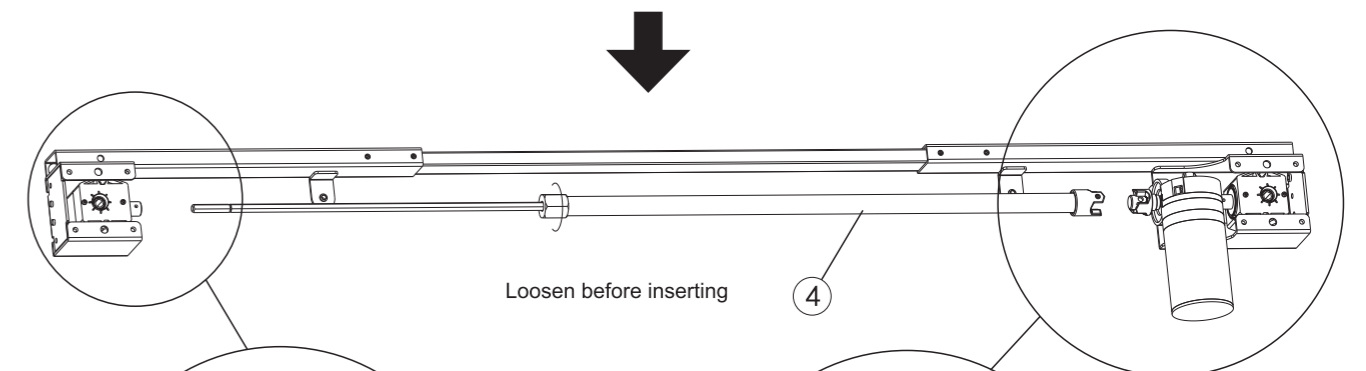


STEP1

Install Beam and Transmission Rod **H(4x4)**

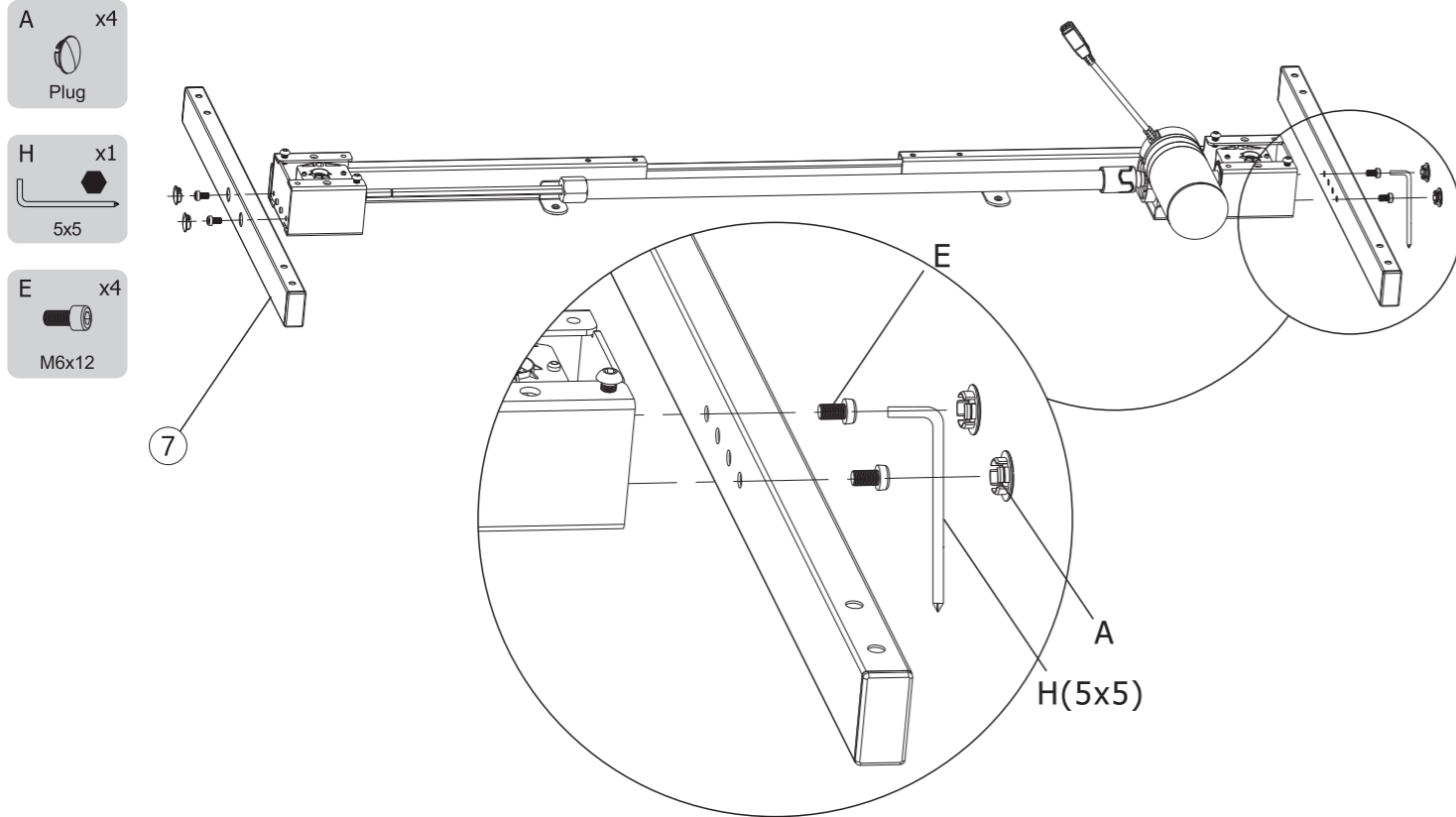


Insert at both ends so that the labels on both sides are not exposed



STEP2

Install Side Tube

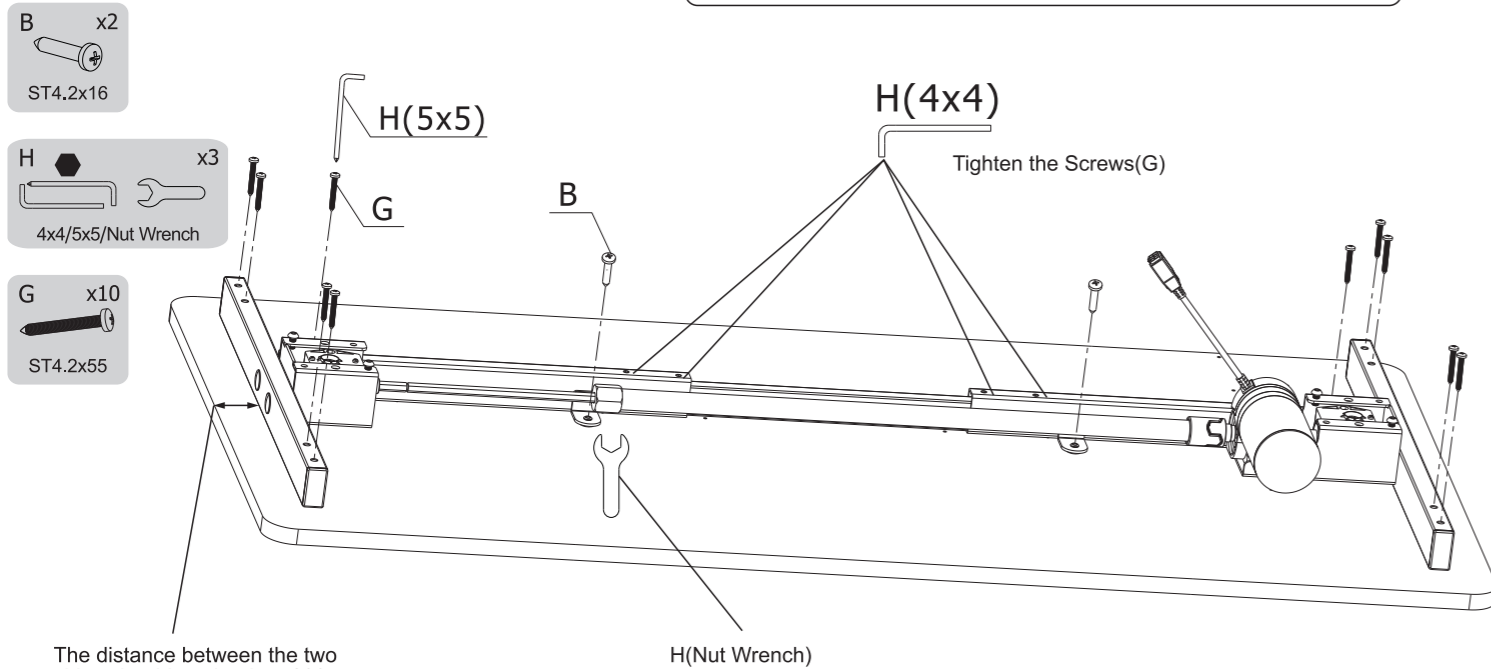


Use a 5x5 (with cross) allen key(H) to tighten the screws(E), fix the side tubes (7), and press the hole plug(A) into the side hole.

STEP3

Attach Tabletop to Beam

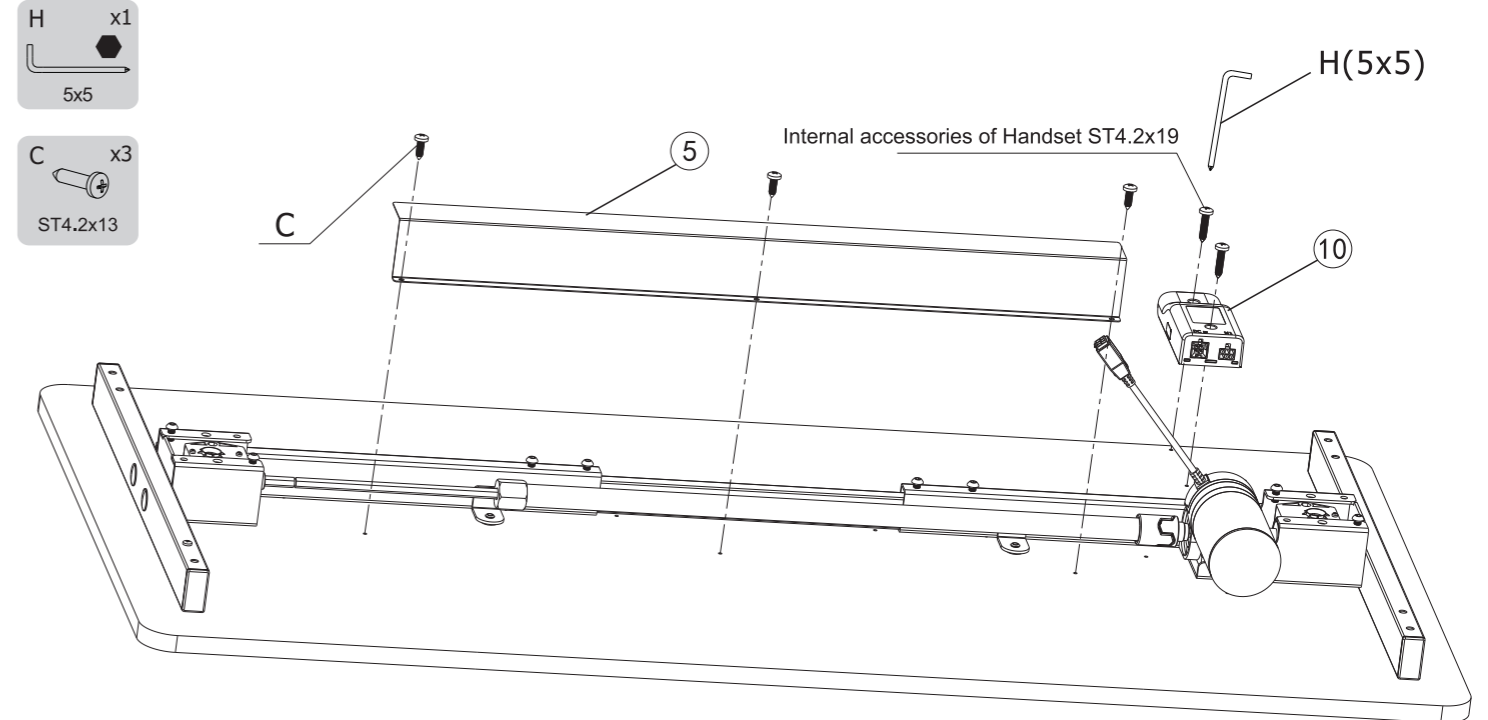
! Note: Place the beam in the middle of the plank and leave a proper distance on each side, then fix it. If the width of the beam is not appropriate, you can refer to step 1 to adjust the width.



Install the beam assembly (step 2) on the tabletop, use a 5x5 (with cross) allen key (H) to screw in the screws(G) and the screws(B) and tighten them.

STEP4

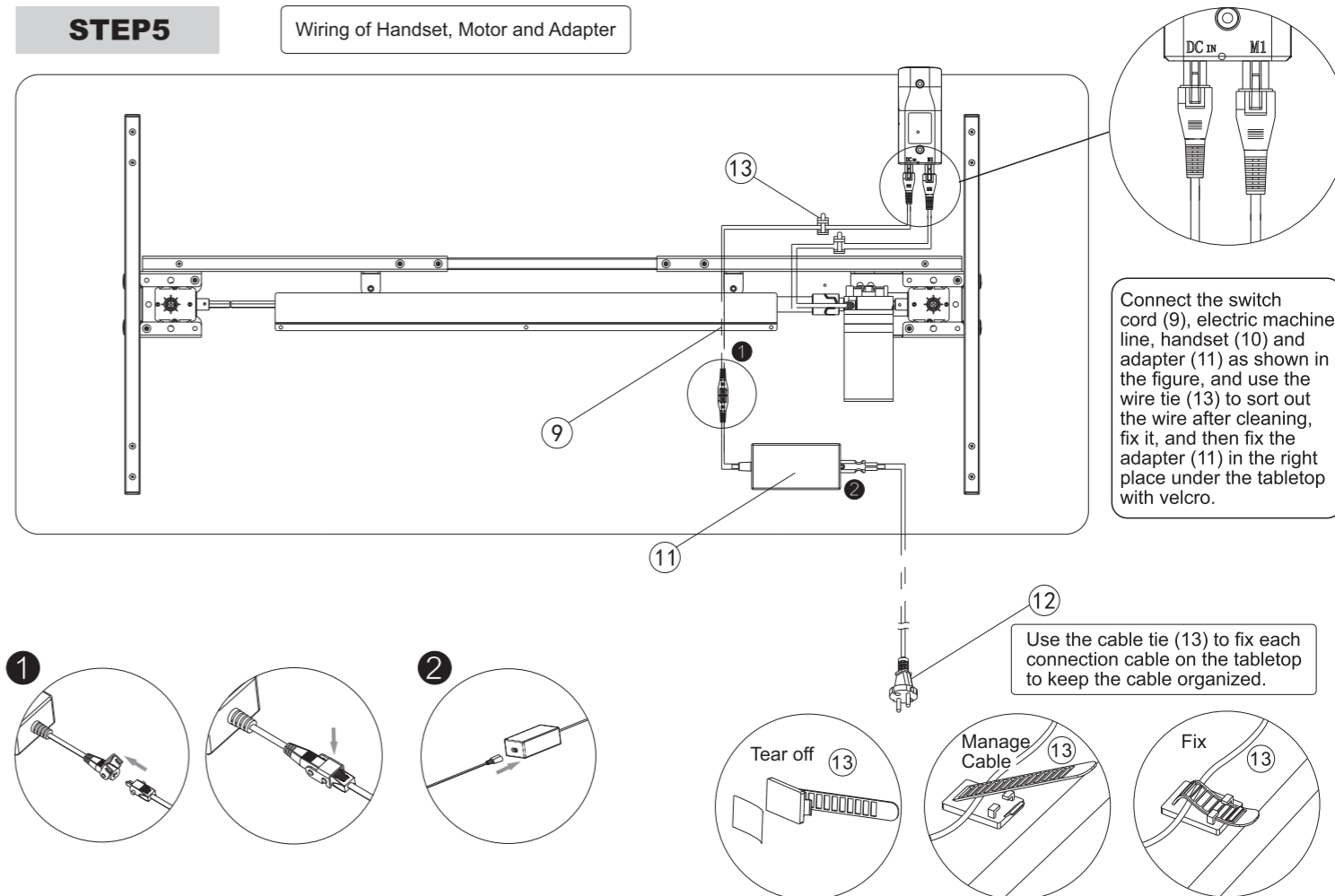
Install Decorative Plate and Handset



Fix the decorative board (5) with screws C to cover the main parts of the transmission rod; fix the handle (10) at the position on the side of the motor (as shown in the figure), and fix it with the ST4.2x19 screws, the internal accessories of Handset.

STEP5

Wiring of Handset, Motor and Adapter



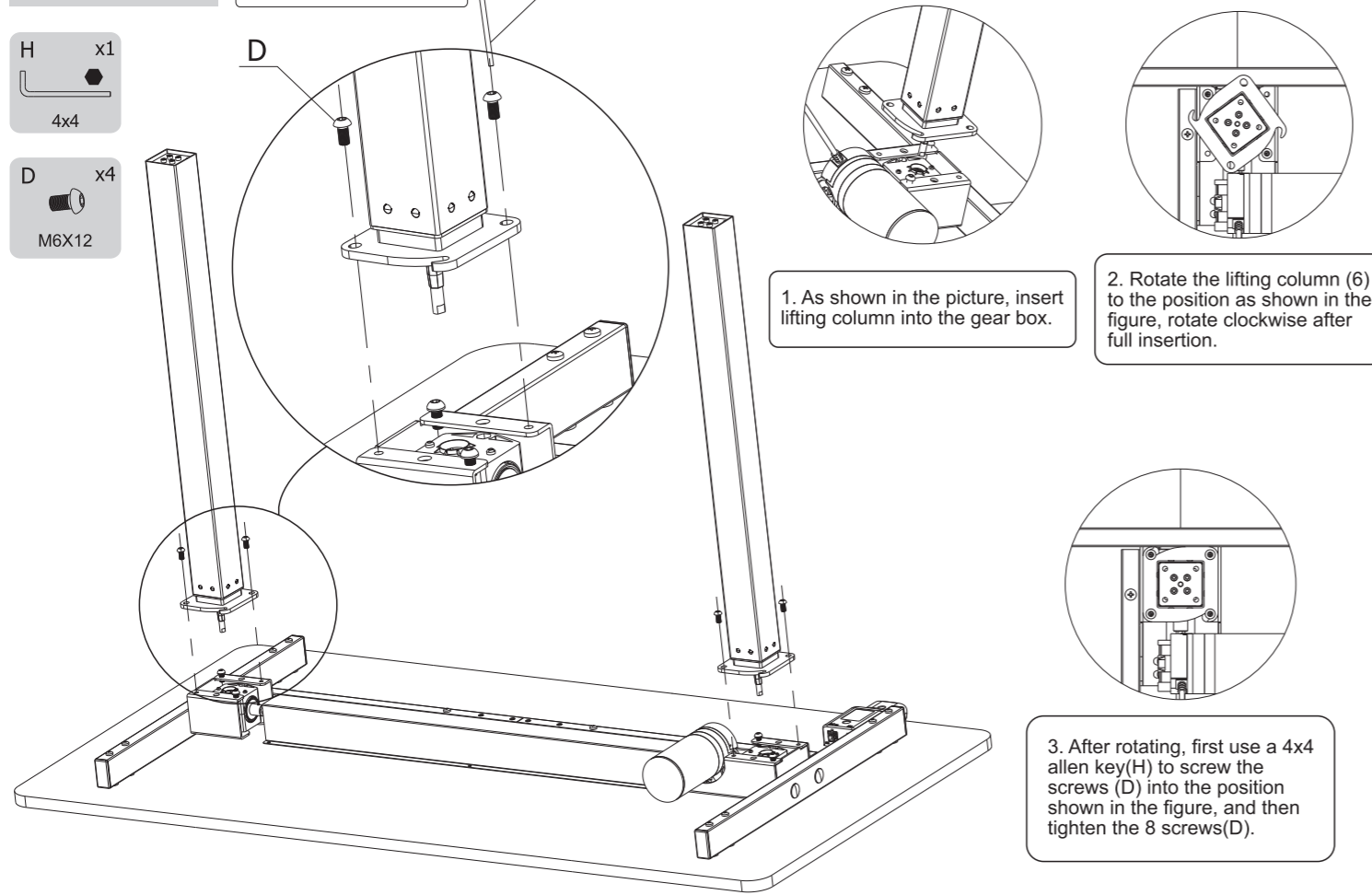
Use the cable tie (13) to fix each connection cable on the tabletop to keep the cable organized.

STEP 6

Assemble Lifting Column H(4x4)

H x1
4x4

D x4
M6X12



1. As shown in the picture, insert lifting column into the gear box.

2. Rotate the lifting column (6) to the position as shown in the figure, rotate clockwise after full insertion.

3. After rotating, first use a 4x4 allen key(H) to screw the screws (D) into the position shown in the figure, and then tighten the 8 screws(D).

How to use handset

●	“▲”	Adjust the desk upwards
●	“▼”	Adjust the desk downwards

Operation

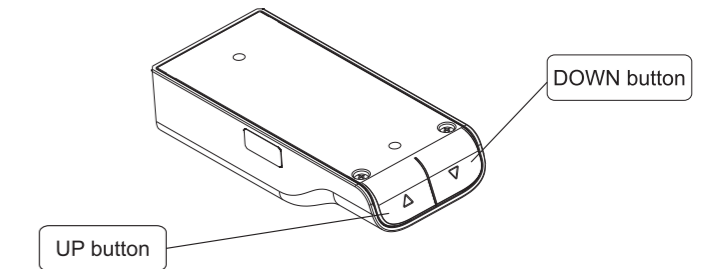
- **Button Lift Function**
Press the “▲” or “▼” button to adjust the height of the desk.
- **Reset Function**
(1) When at the lowest position, long press the “▼” button for more than 5 seconds to enter the reset mode. The reset will be finished until the lift system rebound and stop after reaching the bottom.
(2) When the lifting system fails, release the button, long press the “▼” button, the reset will be finished until the lift system rebound and stop after reaching the bottom.
- **Anti-collision Function**
(1) Built-in sensor, when encountering any objects, the device instantly stops and reverses to avoid damage.
(2) Simultaneously press and hold “▲” and “▼” for more than 5s to turn on or off the anti-collision function.

Troubleshooting

The following tips will help you detect and eliminate common errors. If the error you met is not listed below, please contact your supplier. The manufacturer and professionals will be capable to investigate and correct the error.

Fault phenomenon	Method
No response while long pressing down arrow after connected with a power supply	1. Check if all the cables be connected well 2. Contact your supplier or dealer
The desktop could not be lifted	1. Check if overloaded, max loading: 154lbs 2. Contact your supplier or dealer
Overwork (Duty cycle: Max 2min on/30min OFF)	1. Restart it after suspend for 30mins for the working time is too long 2. Contact your supplier or dealer
Go down but not go up	1. Reset 2. Contact your supplier or dealer
Downward sliding	1. Check if overloaded, max loading: 154lbs 2. Contact your supplier or dealer

Button



Attention

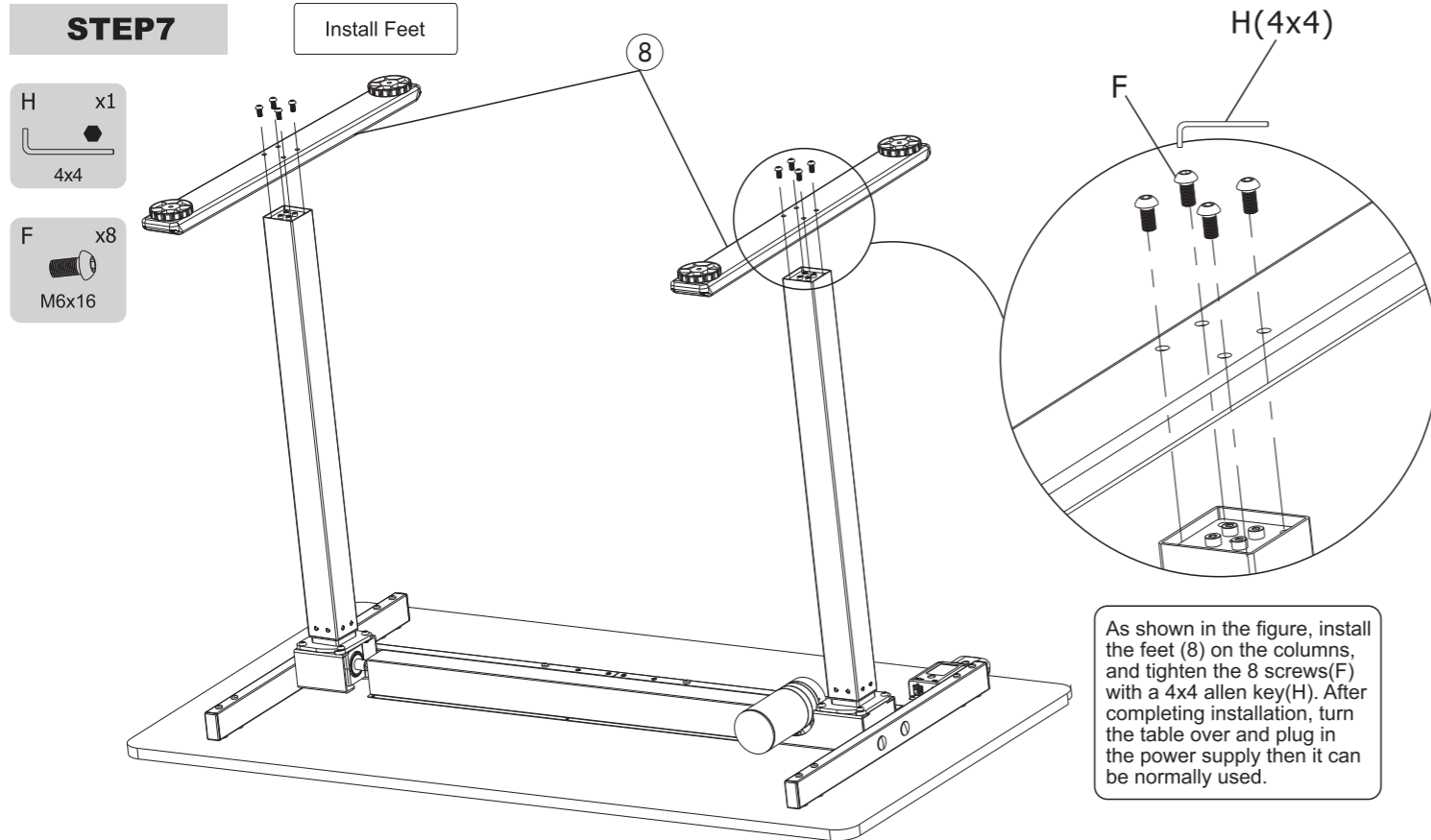
1. Power supply: AC100V-240V,50/60Hz
2. Service Environment: 0-40 °C
3. Unplug the power plug before cleaning, wipe the dust on surface using slightly wet cloth. Please be careful not to let water drops get into the internal parts, do not loose the connector.
4. The electric box contains electronic components, metals, plastics, wires, etc. Please follow local environmental legislation for disposition.
5. Check carefully to ensure correct and complete assembly before using.
6. Be familiar with all functions and program settings of the product before first use.
7. Children are not allowed to play on the product. Any dangerous consequences caused by this improper action will not be the fault of manufacturers.
8. Slight noise may caused by the V-ribbed belt or brake system, it will not affect regular use.
9. Please do not use corrosive or abrasive materials to clean the product. Please ensure the cleanser used will not pollute the environment.
10. This appliance can be used by children aged from 8 years and above and persons with reduced physical, sensory or mental capabilities or lack of experience and knowledge if they have been given supervision or instruction concerning use of the appliance in a safe way and understand the hazards involved. Children shall not play with the appliance.
11. Cleaning and user maintenance shall not be made by children without supervision.
12. If the supply cord is damaged, it must be replaced by the manufacturer, its service agent or a similarly qualified person in order to avoid a hazard.
13. Please make sure there is no hazardous sources in your operating environment, e.g. do not litter the tools around. Always be careful with the packaging materials in order to avoid potential danger. E.g. plastic bags may lead to choking hazard to children.
14. Keep the original package of the product if necessary, in case of future use in transportation.

STEP 7

Install Feet

H x1
4x4

F x8
M6x16



As shown in the figure, install the feet (8) on the columns, and tighten the 8 screws(F) with a 4x4 allen key(H). After completing installation, turn the table over and plug in the power supply then it can be normally used.

Waste disposal



This marking indicates that this product should not be disposed with other household wastes. To prevent possible harm to the environment or human health from uncontrolled waste disposal, recycle it responsibly to promote the sustainable reuse of material resources. To return your used device, please use the return and collection systems or contact the retailer where the product was purchased. They can take this product for environmental safe recycling.